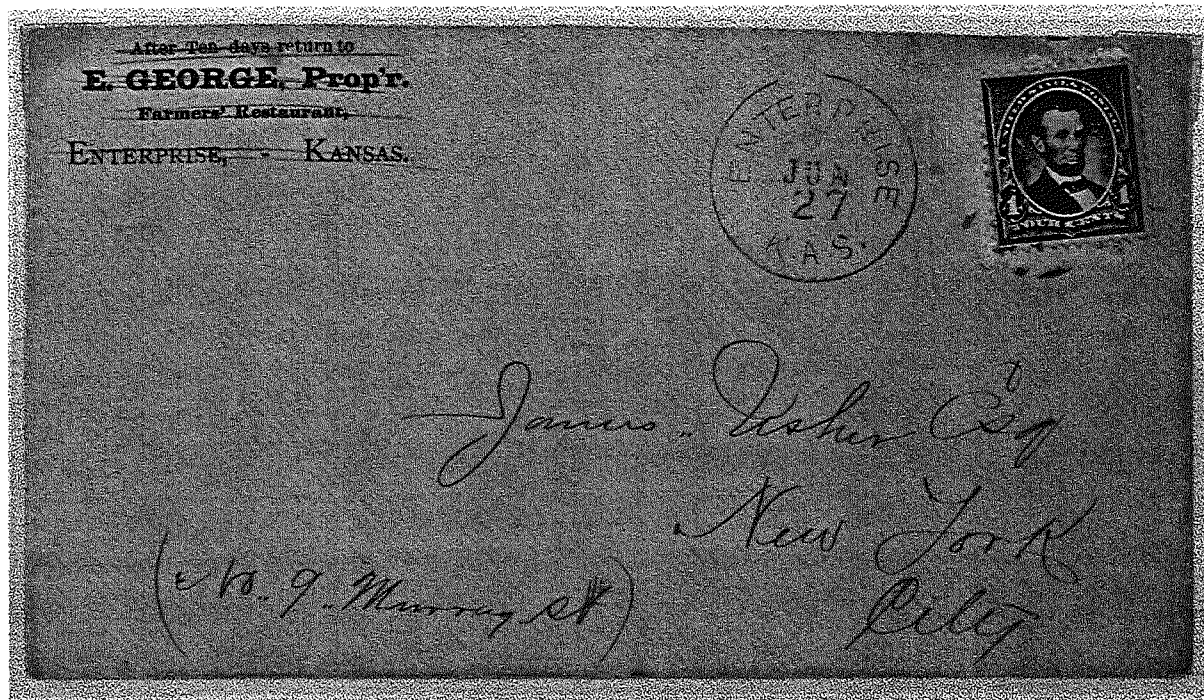
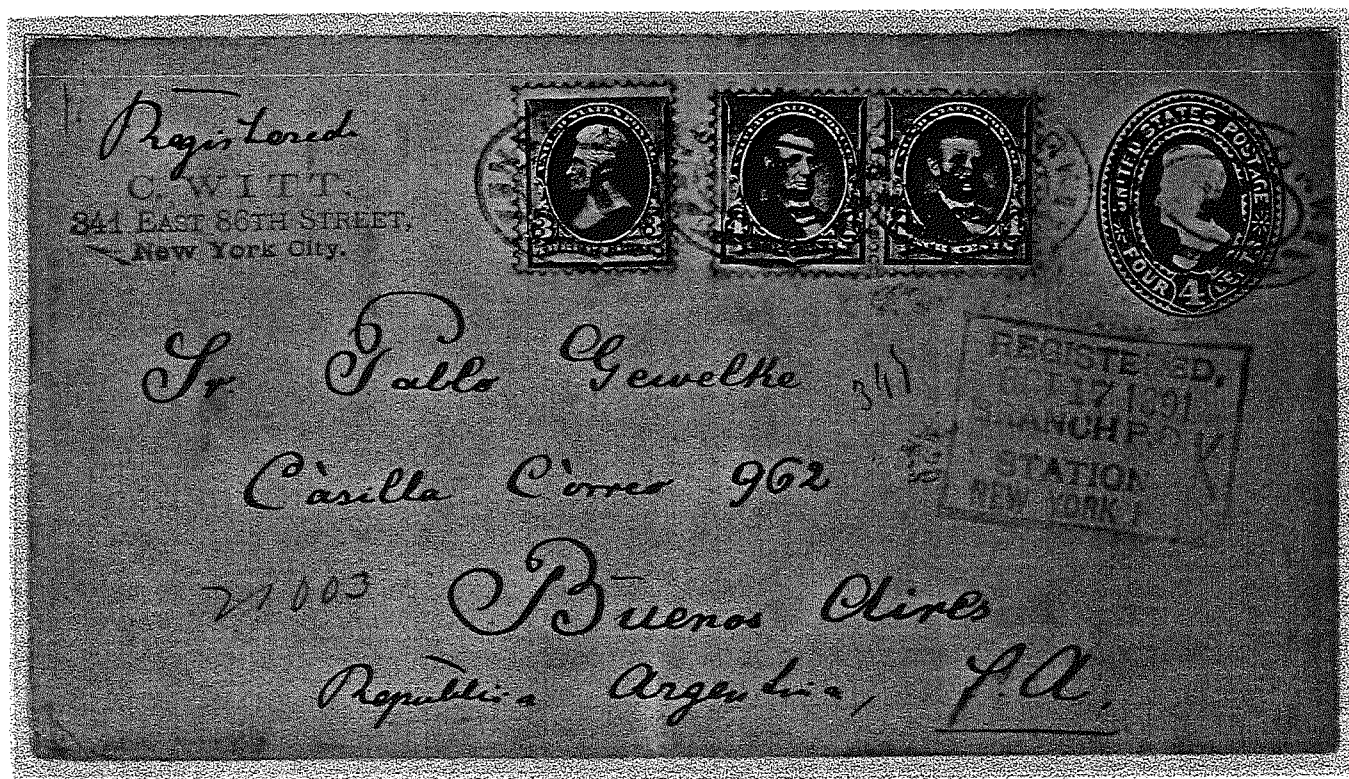


The Four Cent Issue of 1890

Double First Class and Foreign Registry



6/27/94 - Double First Class Rate



10/17/91 - Used with Three Cent 1890 on Four Cent Entire
Ten Cents pre-1893 Registry Rate plus U.P.U. to Argentina

The Four Cent Issue of 1890

Combinations for Domestic Registry

Larger Cover:

8/10/94 - Pair used with Two Cent 1890

Middle Cover:

3/5/94 - Pair used on Columbian Entire

Lower Cover:

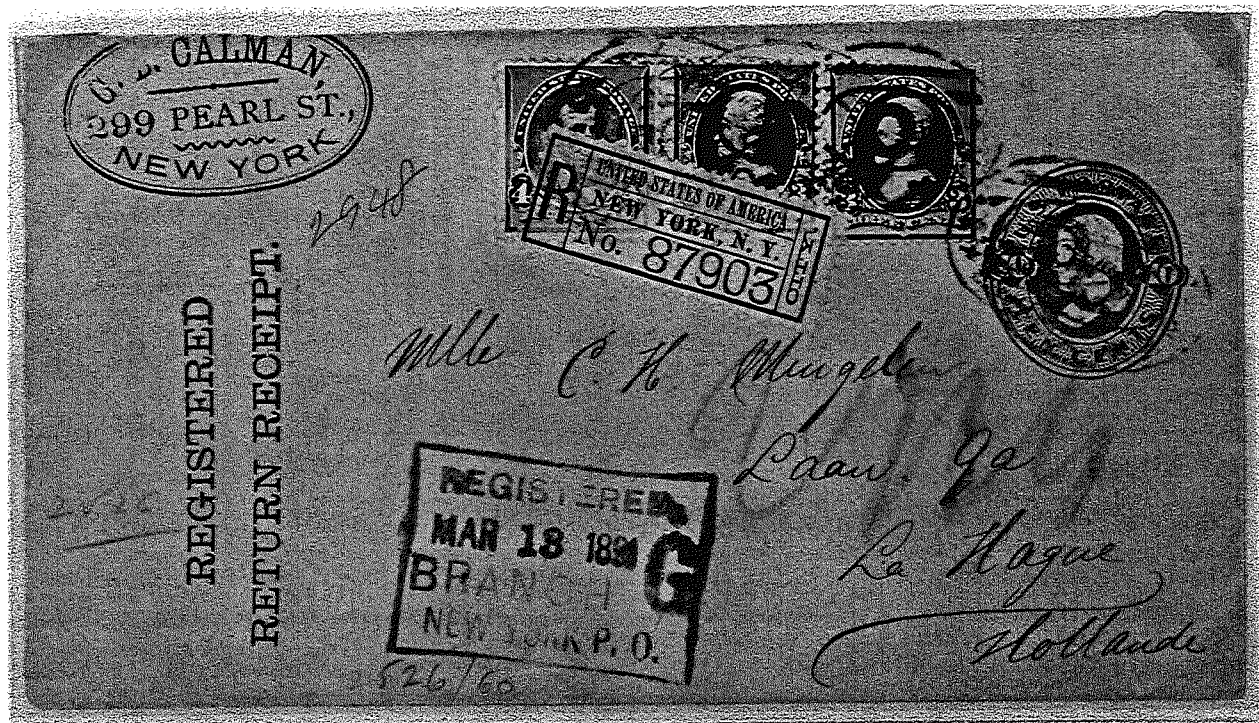
4/10/93 - Pair and Single
Double First Class Rate

All show payment of the post-January 1,
1893 Registry Rate plus First Class Rate



The Four Cent Issue of 1890

Foreign Registry Usages



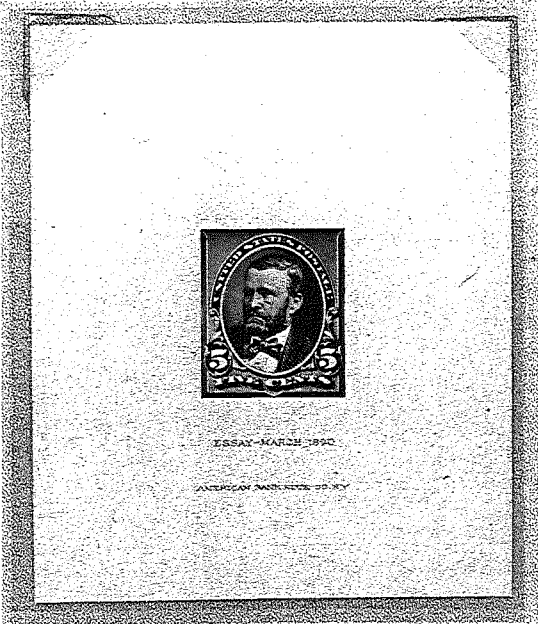
3/13/91 - Pre-1893 Registry Rate of Ten Cents plus U.P.U. Rate and Five Cents Return Receipt Fee
Used on Ten Cent Entire with (2) Three Cent 1890 Issues to Holland



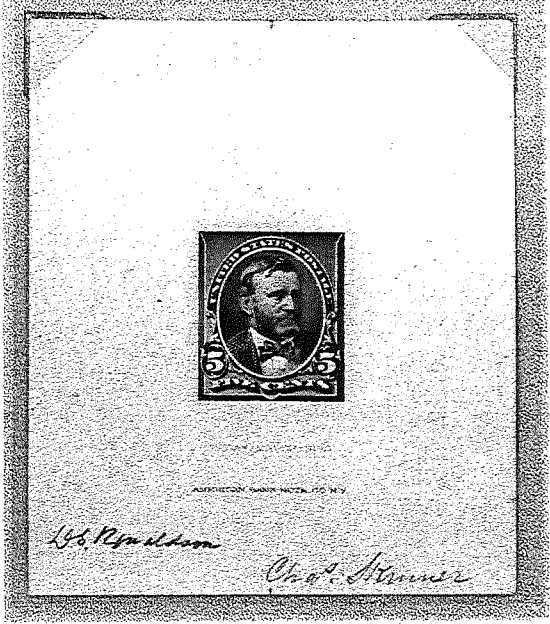
1/14/1901 - Pair used with 1898 One and Two Cent on Two Cent Entire
Post-1893 Registry plus U.P.U. Rate to Switzerland

The Five Cent Issue of 1890

Essays and Trial Color Proofs



Essay
Facing left with different haircut



Essay
Facing right, vignette in new position

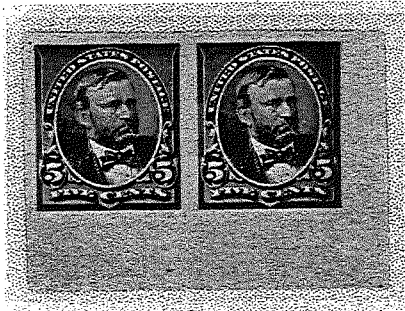


Die Essay in Scarlet



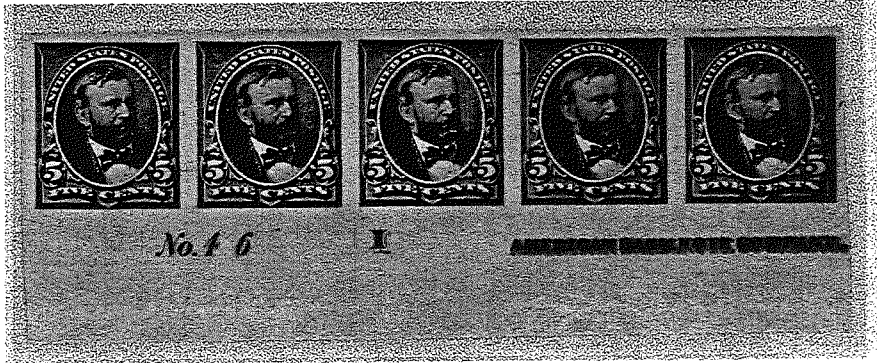
Die Essay in Blue

PFC 241360



Trial Color: Lake Brown
(Unlisted Color)

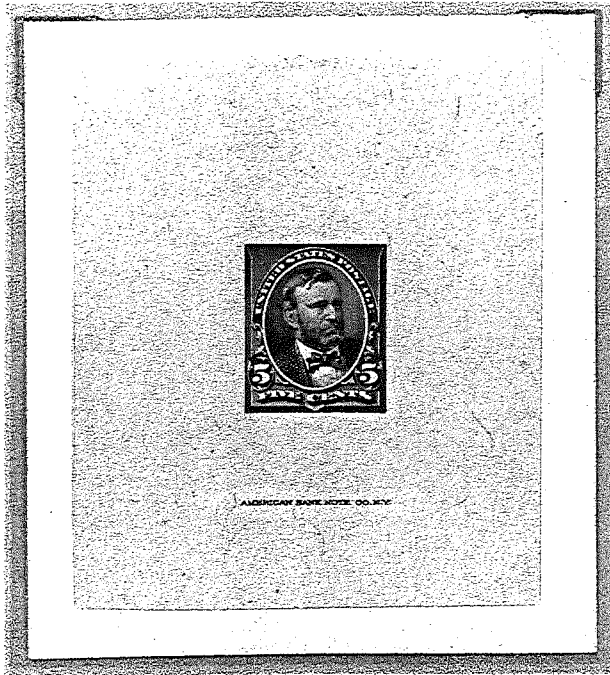
PFC 0225931



Trial Color: Black Brown, Plate 146 - one of four known Plate Numbers

Issued: June 2, 1890
Earliest Known Usage: June 14, 1890
Most Common Usage: U.P.U. Single Ounce Rate

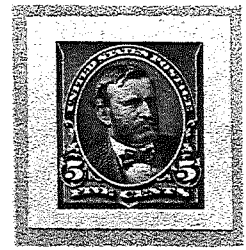
Proofs and the Issued Stamp



Large Die Proof



India Paper Plate Proof



Small Die Proof



Cardboard Plate Proof



The Issued Stamp

PFC 101942



Imperforate Pair

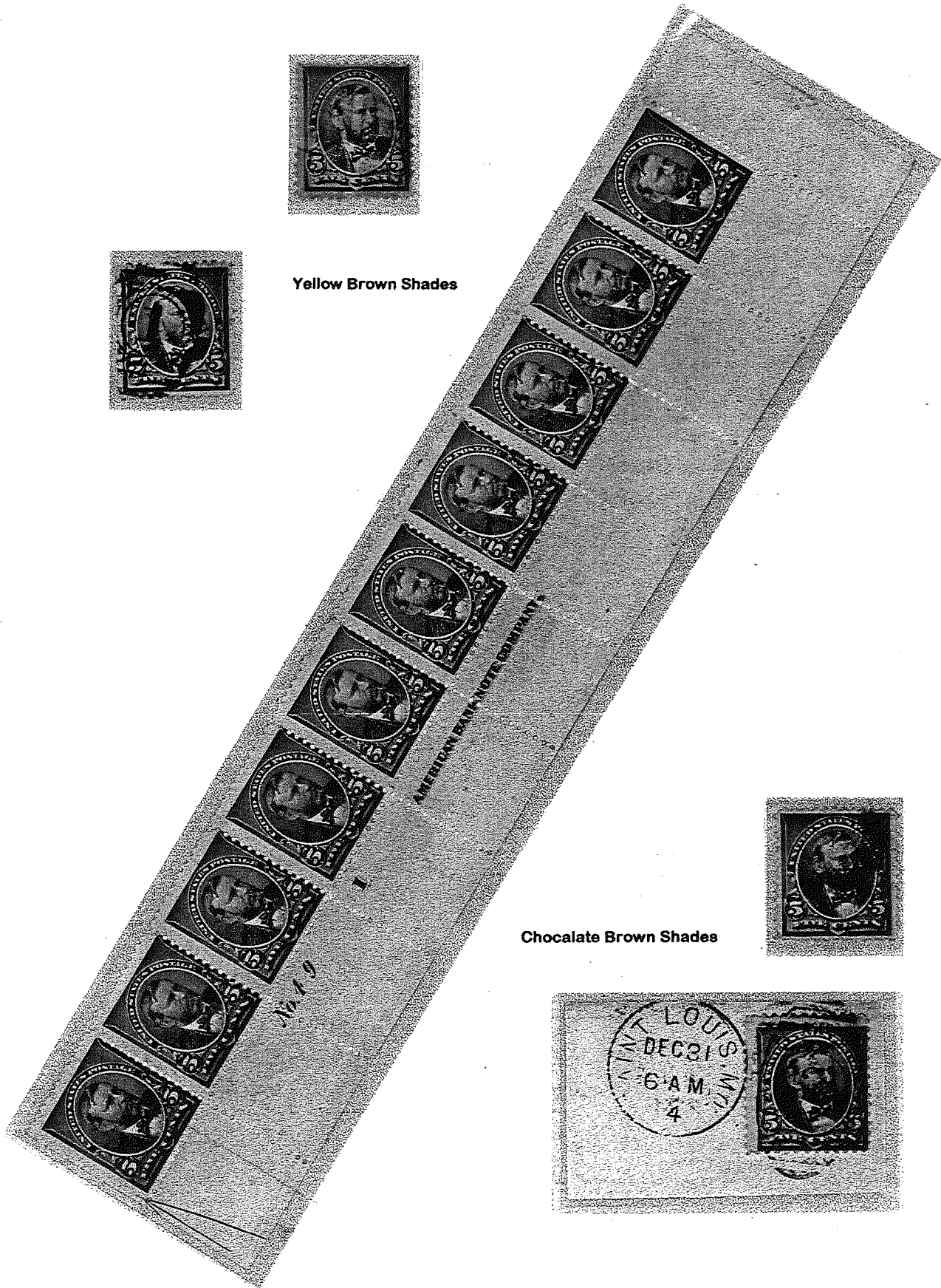


Plate Block of 12, Plate 148

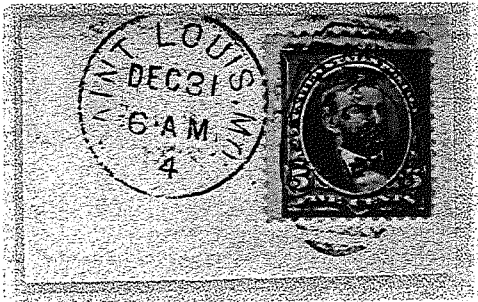
Color Varieties of the Issued Stamp



Yellow Brown Shades



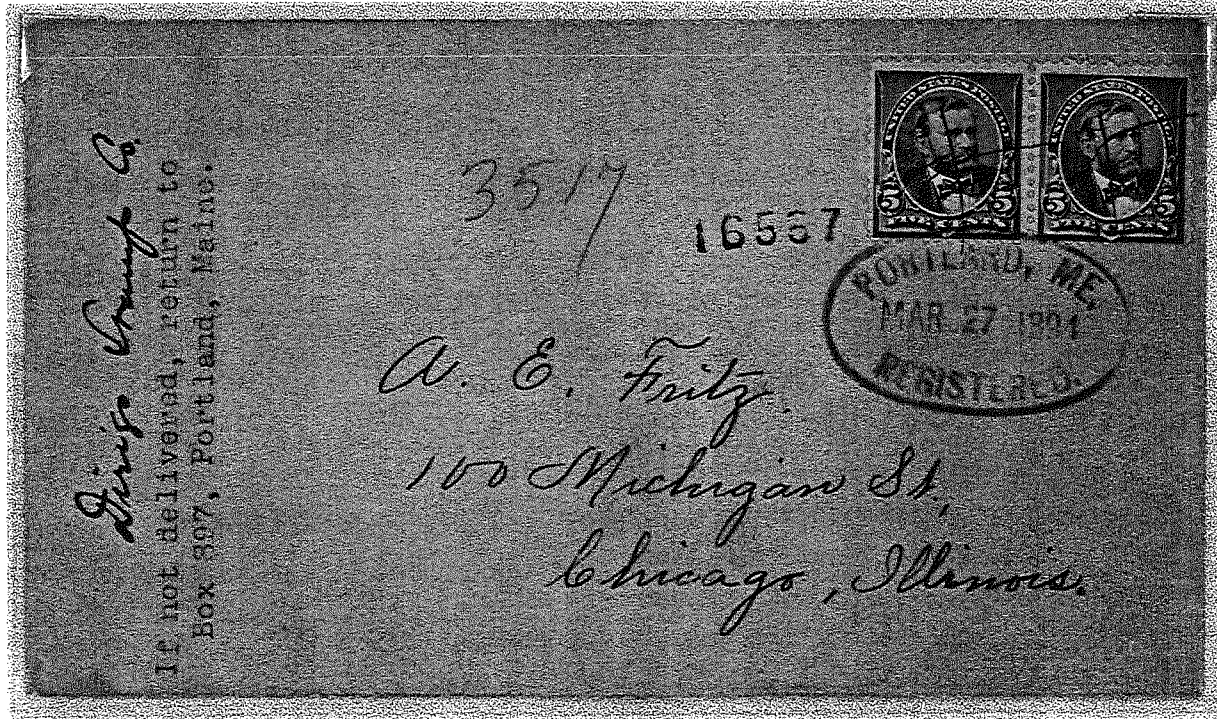
Chocolate Brown Shades



Domestic Registry Usages

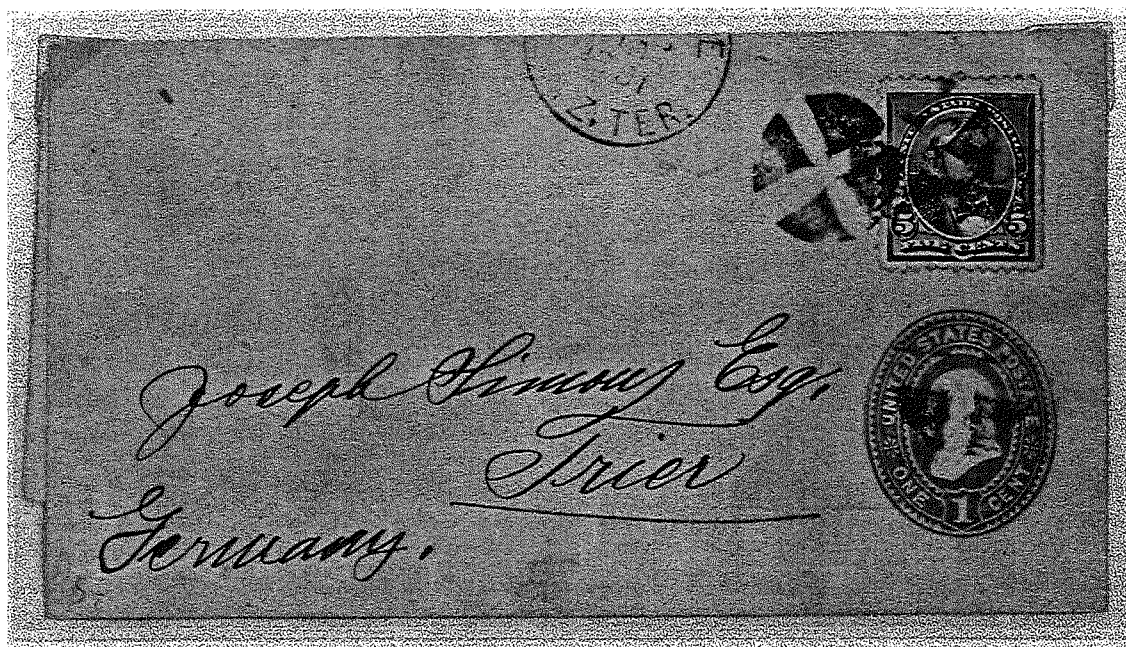


6/27/91 - Pair used on Two Cent Entire, pre-1893 Registry plus First Class Rates
New Mexico Territorial Usage

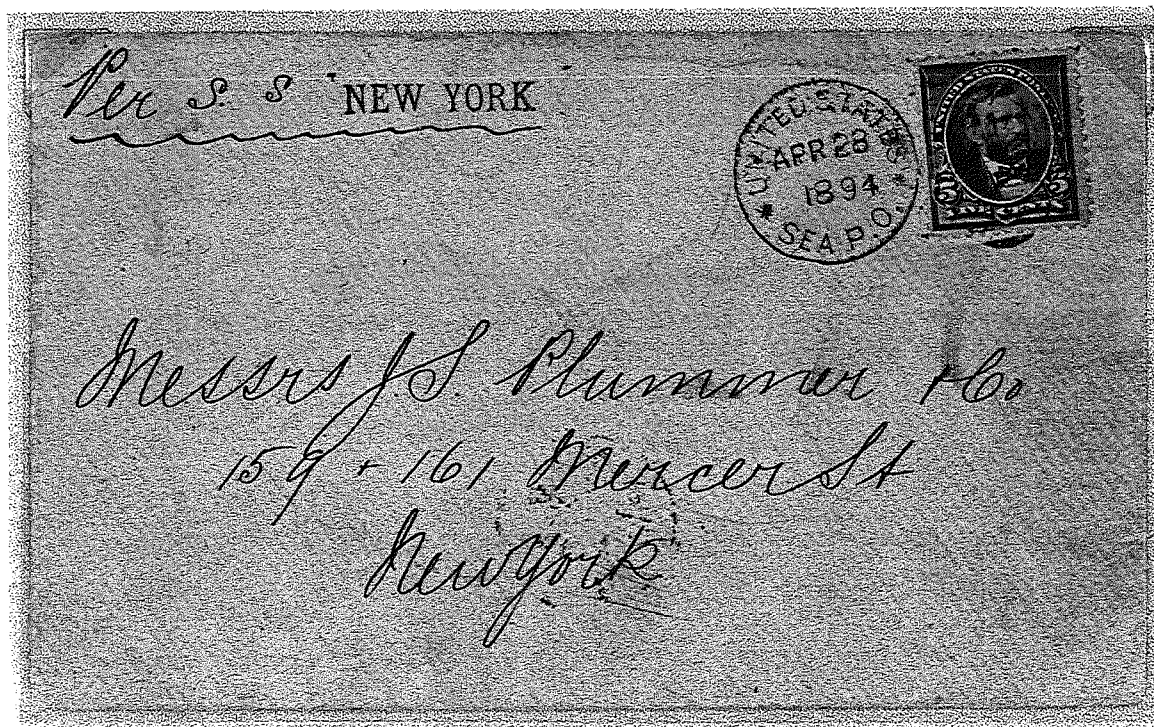


3/27/94 - Pair used to pay the post-1893 Eight Cents Registry Rate plus First Class

Foreign Circular Rate/Sea Post Office Usage



1891 Usage on One Cent Wrapper
Paid Six Times 2 oz. Rate or Minimum Five Cent Rate for Commercial Paper

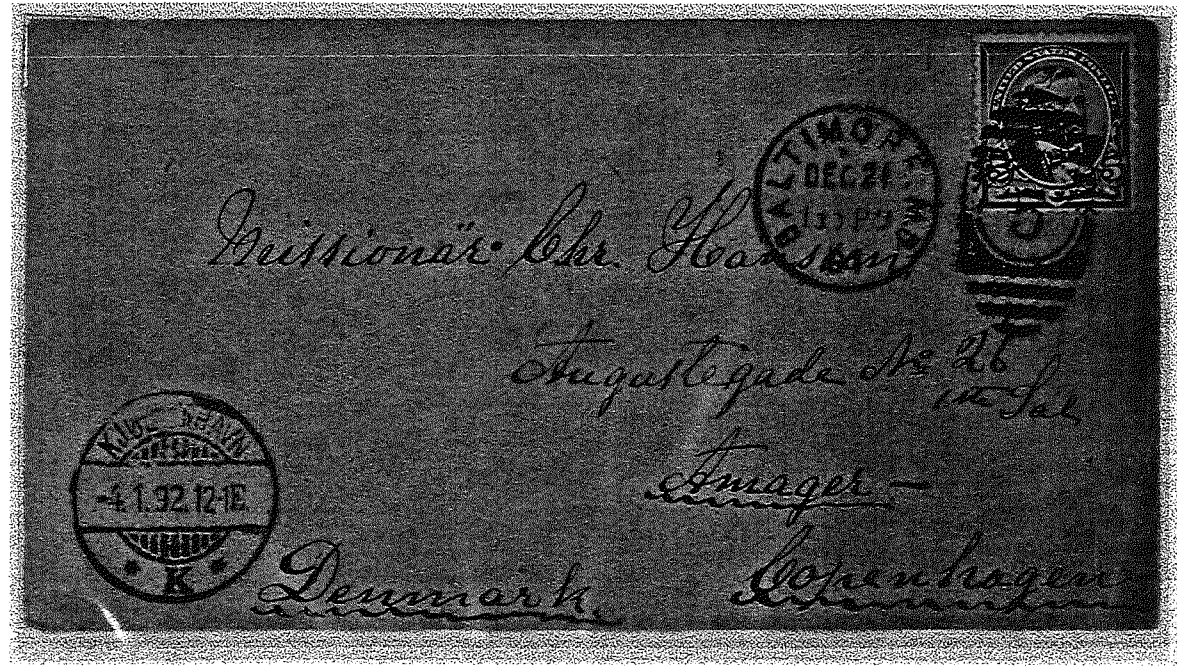


4/28/94 - United States Sea Post Office to New York

U.P.U. Rates to Foreign Destinations

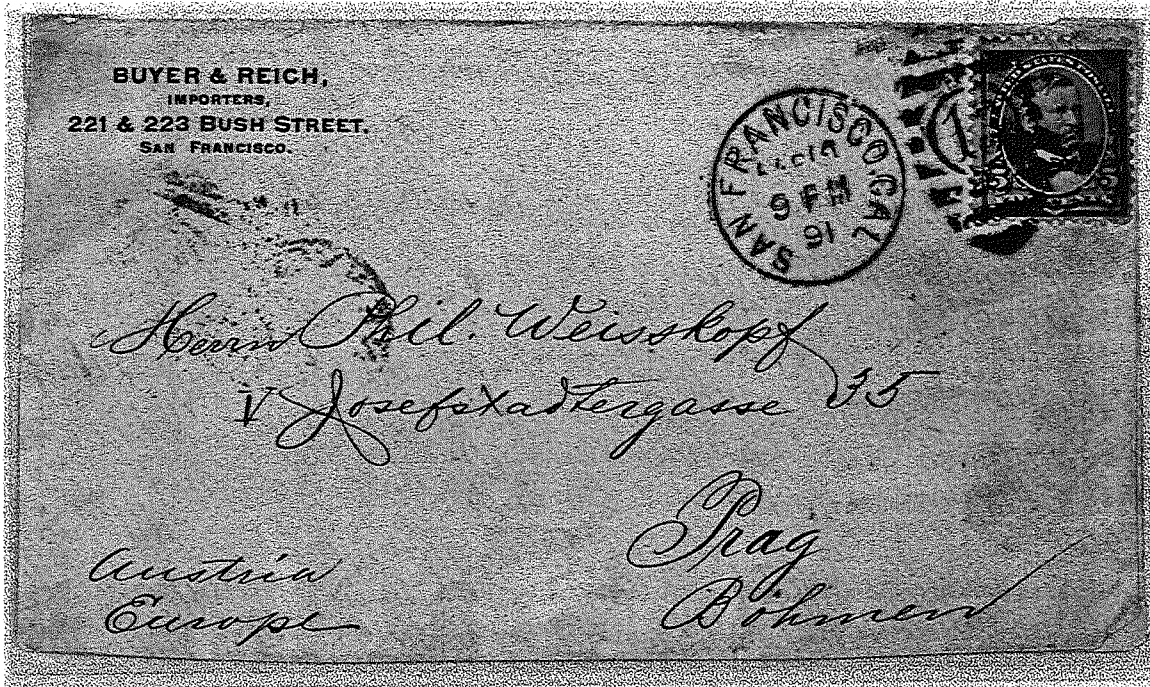


3/1/92 - Double Rate to Stockholm, Sweden

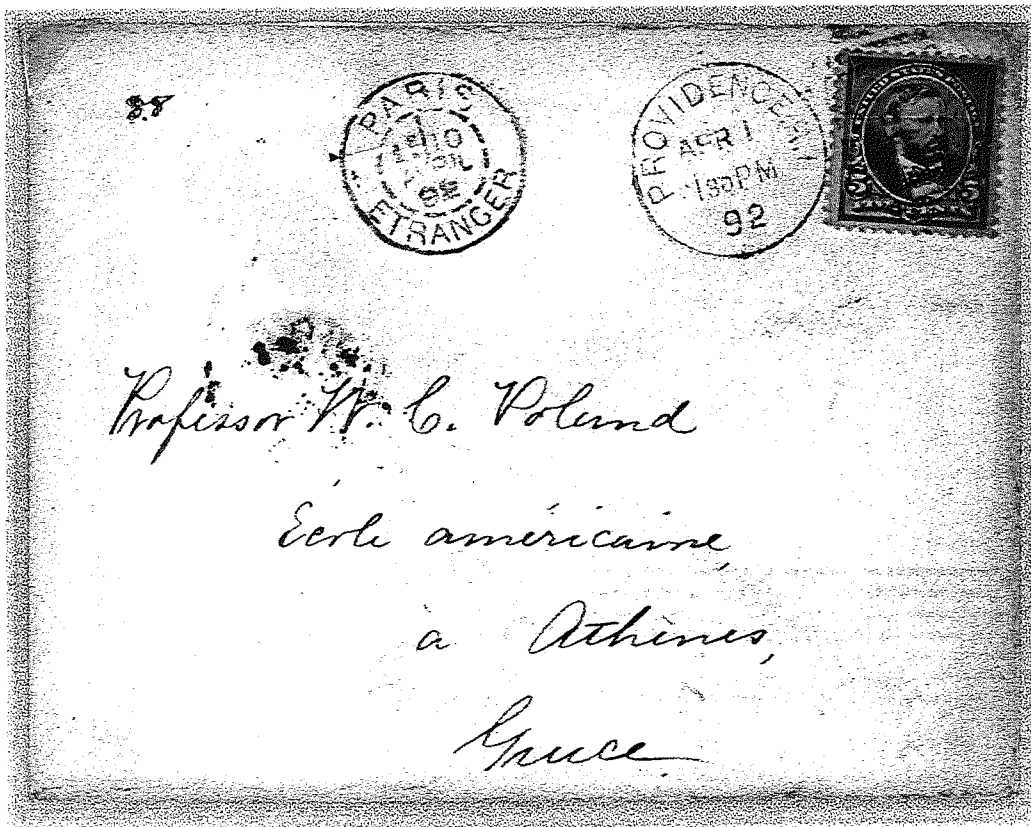


12/21/92 - Copenhagen, Denmark

U.P.U. Rates to Foreign Destinations



2/10/91 - Prag(ue), Bohemia

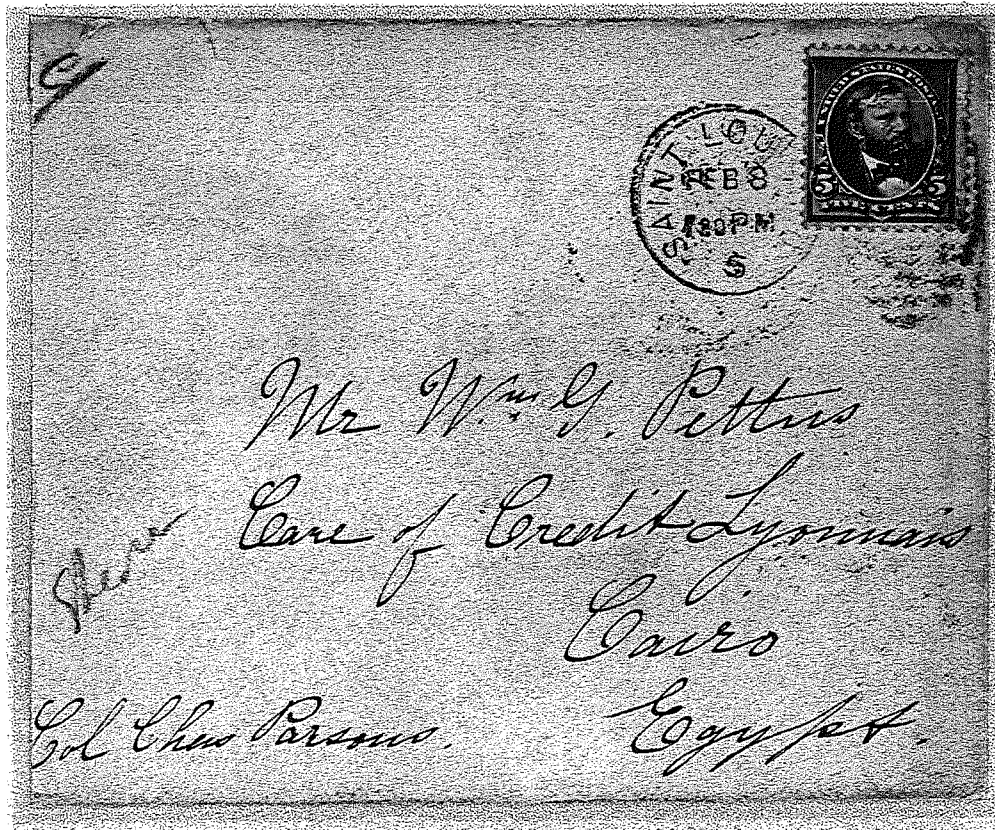


4/1/92 - Athens, Greece

U.P.U. Rates to Foreign Destinations

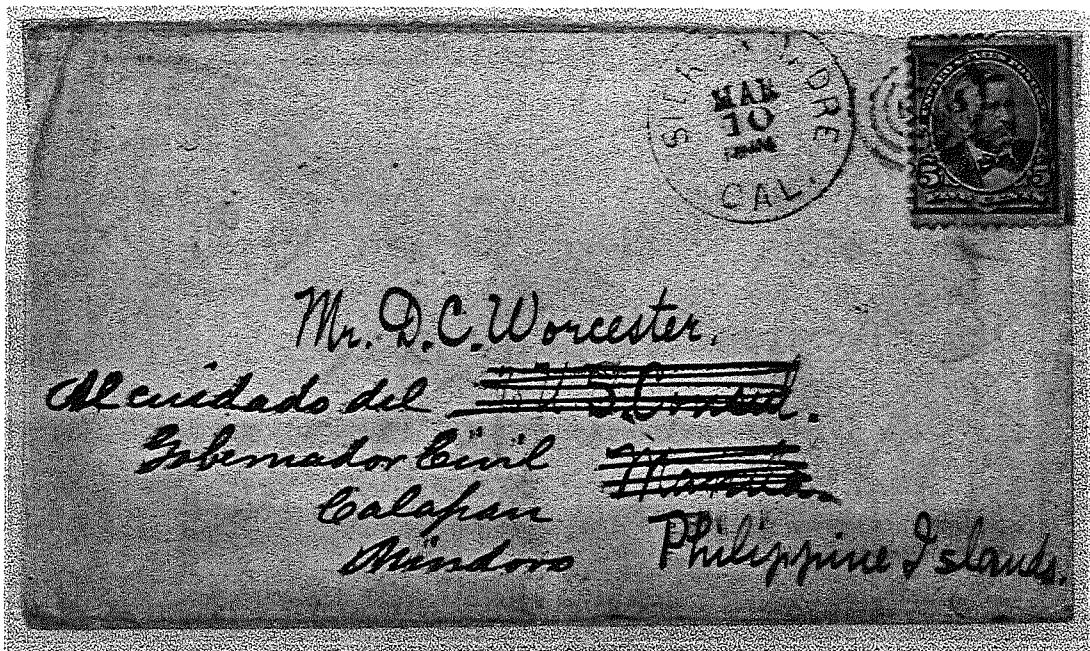


7/11/94 - Bangkok, Siam

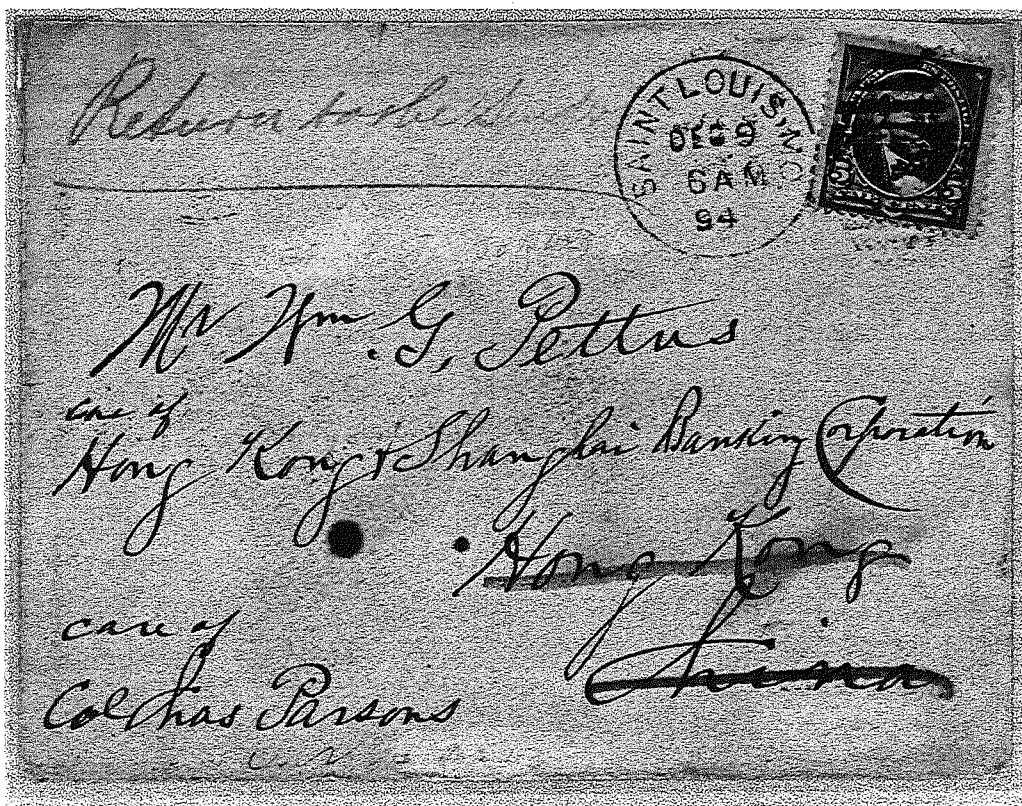


2/8/95 - Cairo, Egypt

U.P.U. Rates to Foreign Destinations



3/10/94 - Manila, Philippine Islands
Forwarded to Mindanao

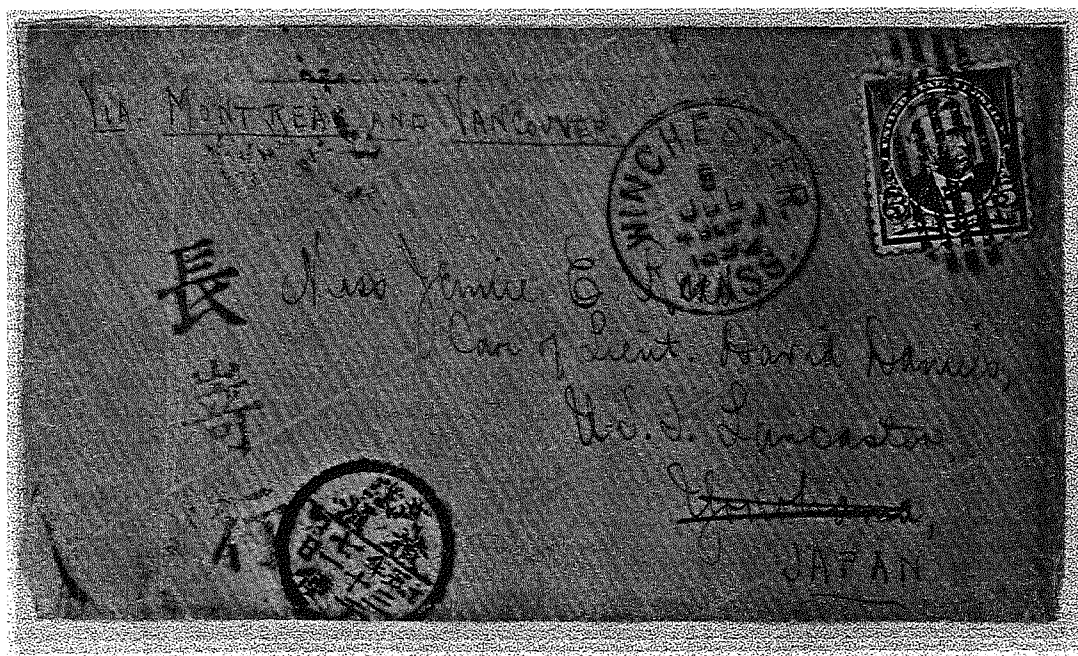


12/9/94 - Hong Kong

U.P.U. Rates to Foreign Destinations

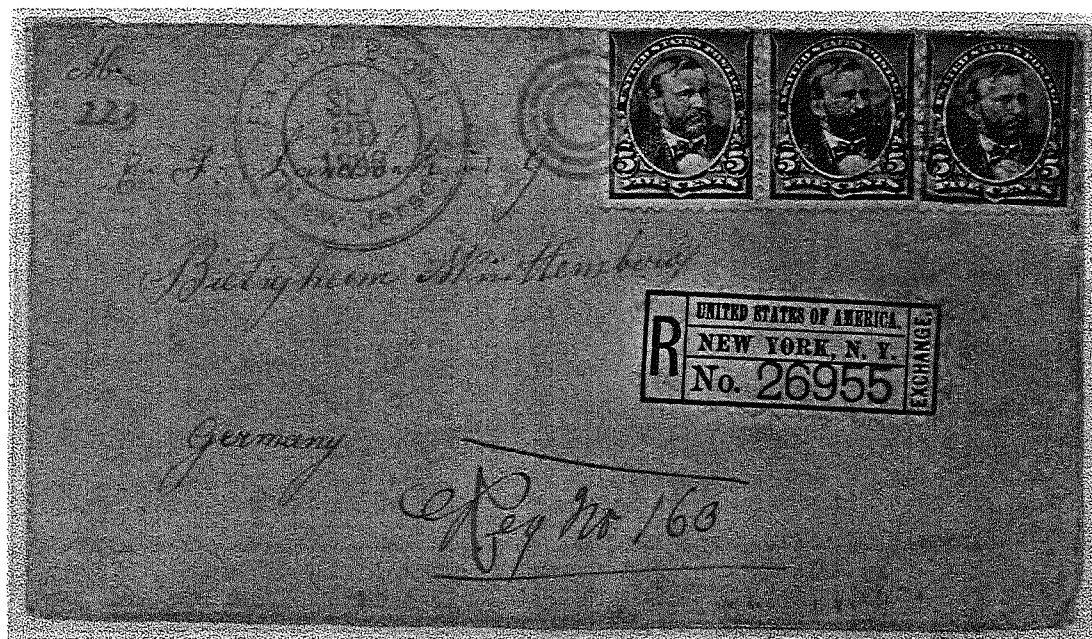


3/6/91 - Seoul, "Corea" and returned

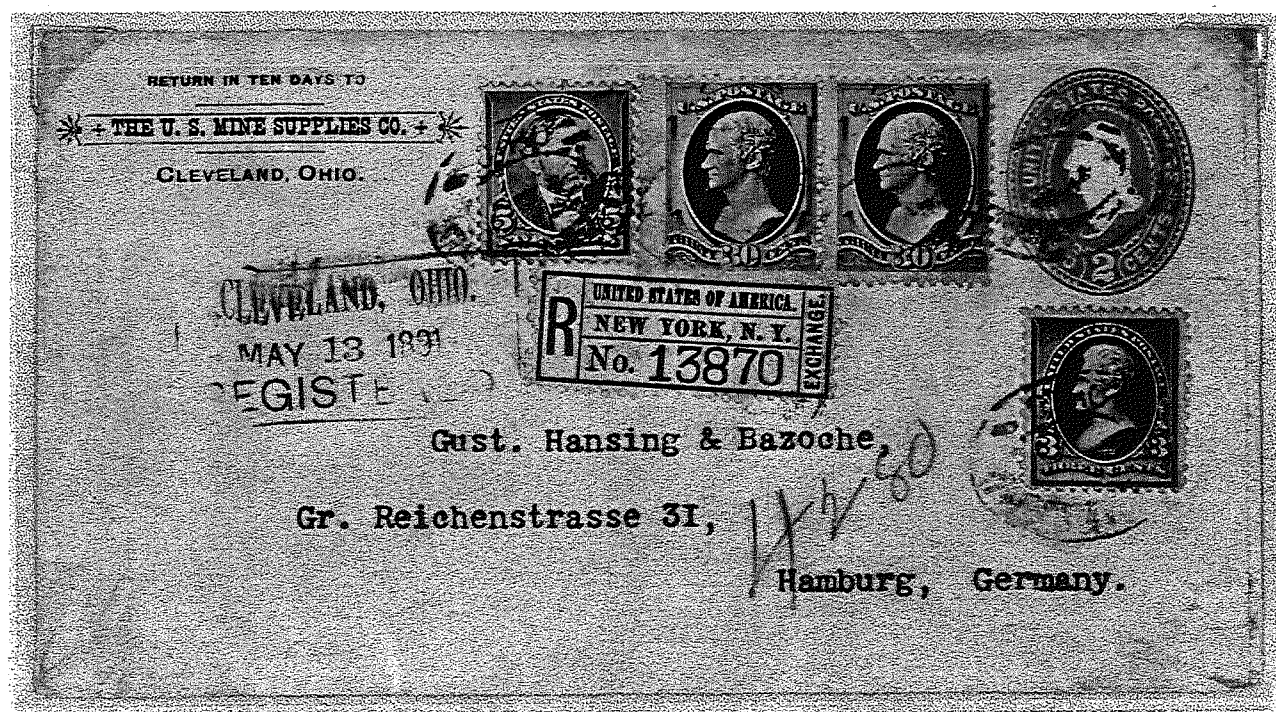


7/8/92 - Yokohama, Japan

Foreign Destination Registered Usage

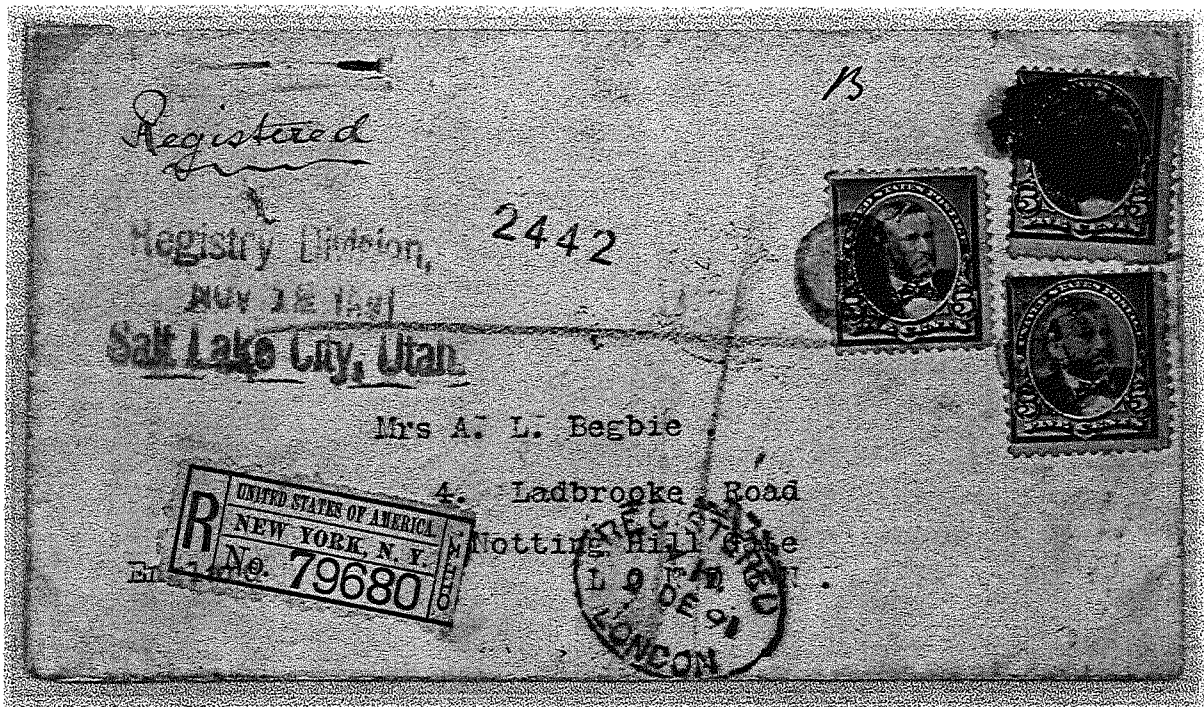


9/29/90 - Pair plus Single
Paid the pre-1893 Registry Fee of Ten Cents plus U.P.U. Rate to Germany

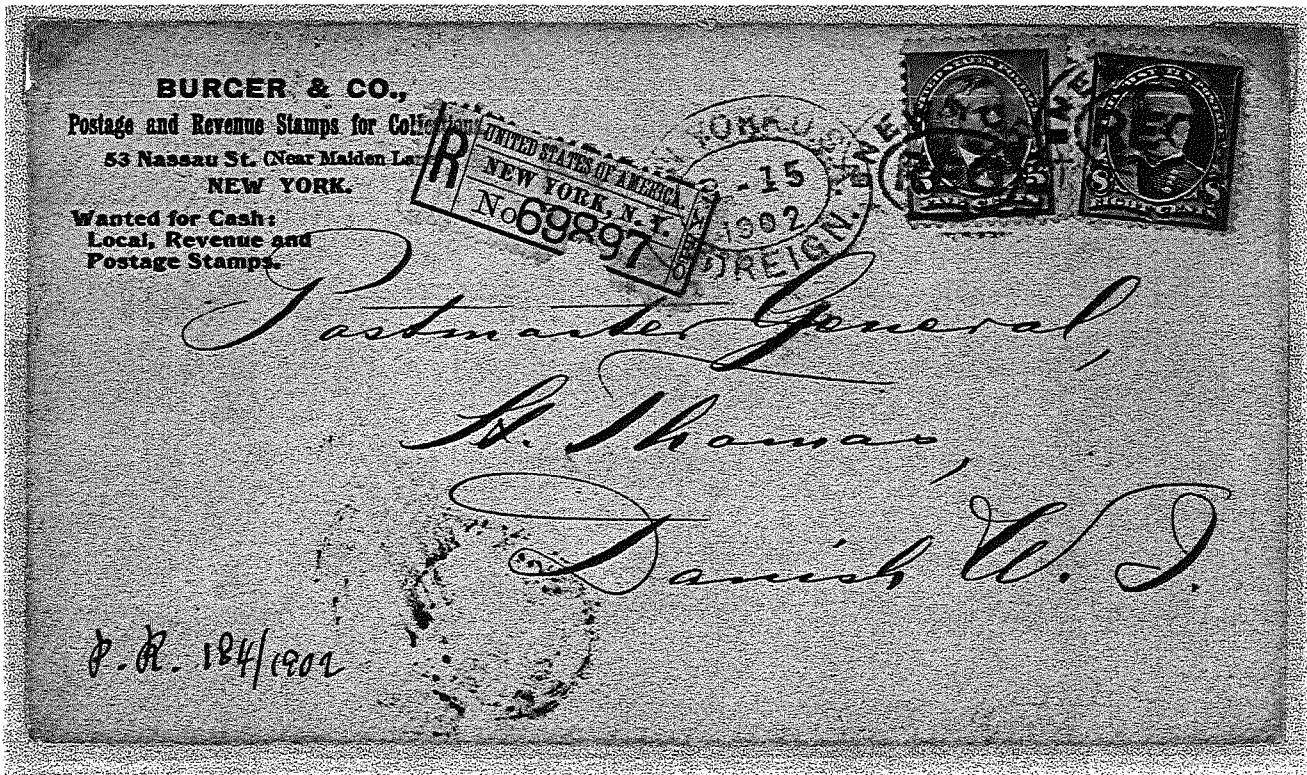


5/13/91 - Used with 1888 Thirty Cent (pair), 1890 Three Cent on Two Cent Entire
Ten Cent pre-1893 Registry Rate plus twelve times U.P.U. Rate to Germany

Foreign Destination Registered Usage



11/18/91 - Pre-1893 Registry Rate plus U.P.U. to London
Utah Territorial



3/15/1902 - Used with 1895 Eight Cent to Danish West Indies
Eight Cent post-1893 Registry Rate plus U.P.U. Rate

Foreign Destination Registered Usage



4/7/94 - Used with Eight Cent Columbian to Haiti

PFC 137729



8/11/94 - Used with 1890 One Cent and (2) 1894 Six Cent: Earliest Known Usage of the 1894 Six Cent Post - 1893 Registry plus Double U.P.U Rate to Belgium, forwarded to Switzerland

The Five Cent Issue of 1890

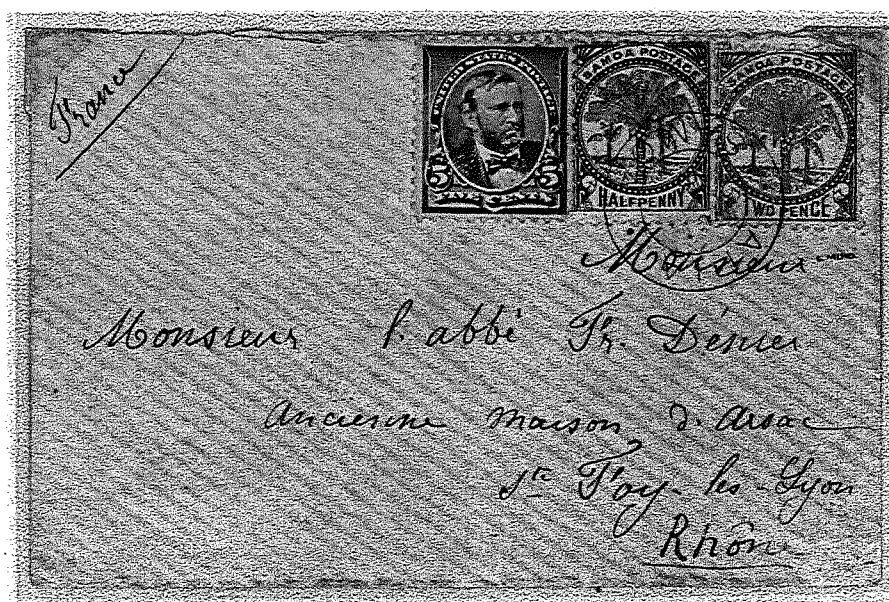
Used from Shanghai, China

4/24/94 - Double Rate
6/26/91 - Single Rate



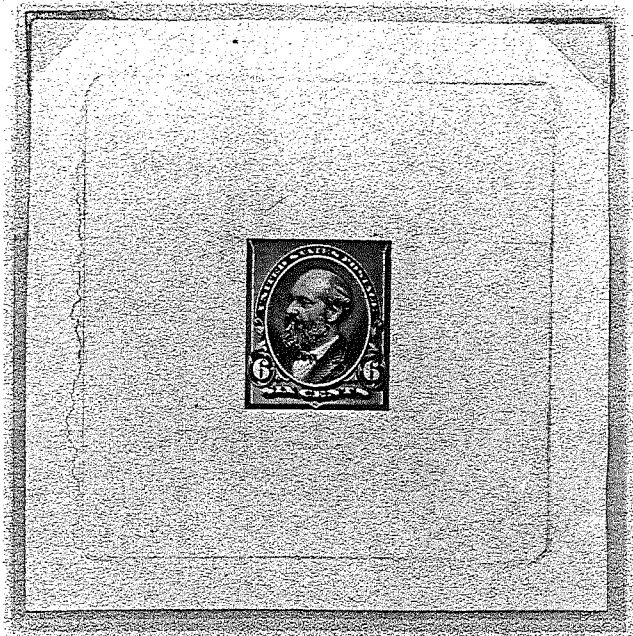
Used from Samoa

PFC 102832

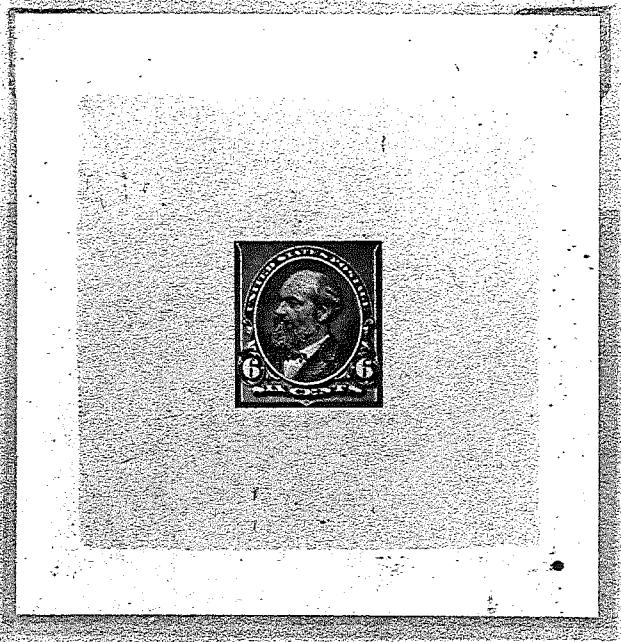


10/16/91 - From Apia, Samoa to France via San Francisco
2 1/2 Pence rate from Samoa to the United States,
Five Cents from the United States to France

Trial Colors



Black Die Proof on Glossy Ivory Paper (Unlisted Type)



Orange Red Die Proof on India Paper

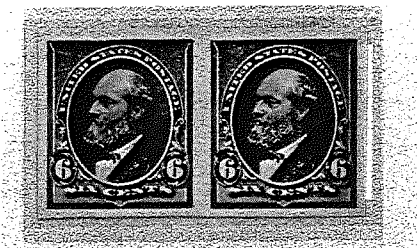


Orange Red

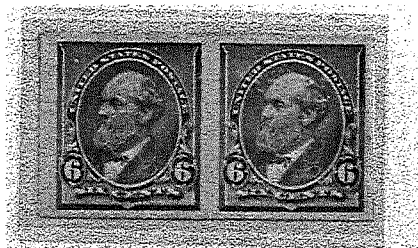


Imprint and Plate Numbered Strip (Plate #23 is the only Plate #)
Red Brown

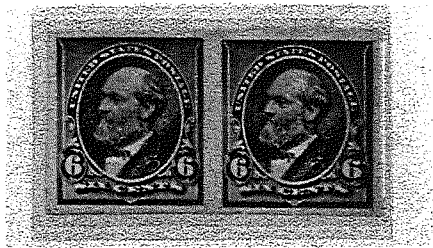
Trial Colors



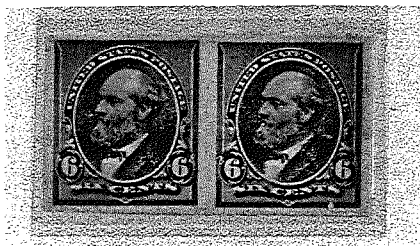
Violet Black



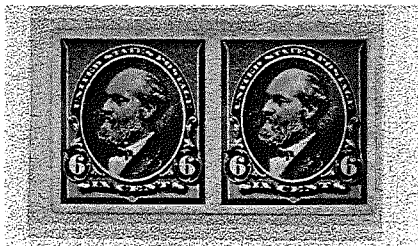
Yellow



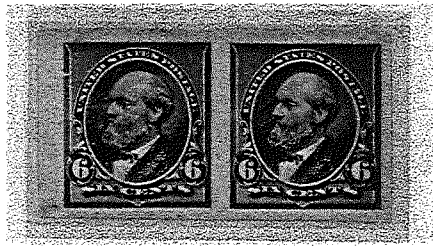
Olive Green



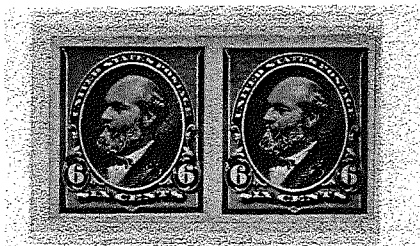
Purple



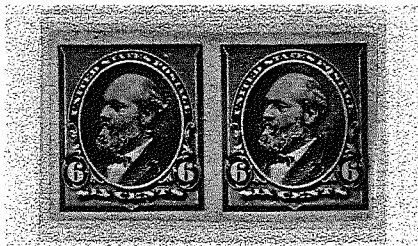
Red Orange



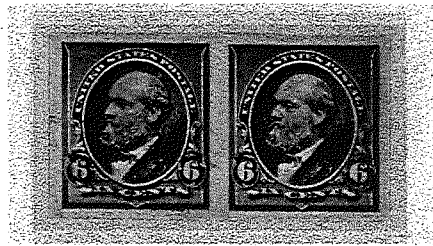
Brown



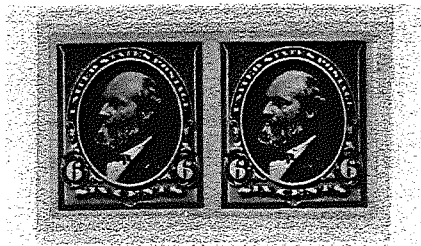
Red Brown



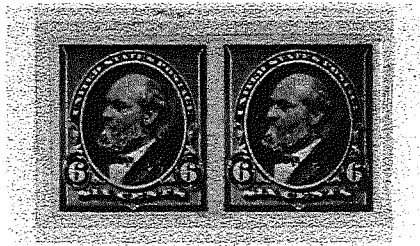
Orange Brown



Black Brown



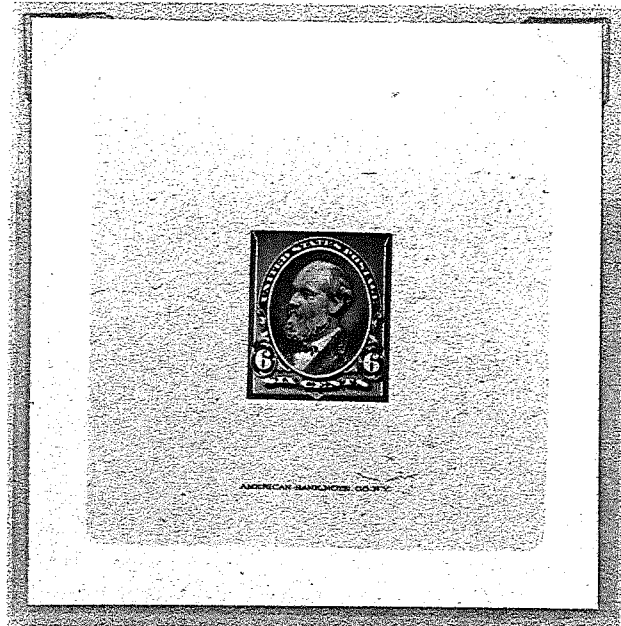
Slate Green



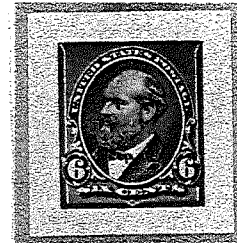
Brown Olive

Proofs

Issued: February 22, 1890
 Earliest Known Usage: May 30, 1890
 Most Common Usage: In Combination



Large Die Proof



Small Die Proof



India Paper Plate Proof
 Plate #23 is the only known Plate Number



Cardboard Plate Proof

The Issued Stamp



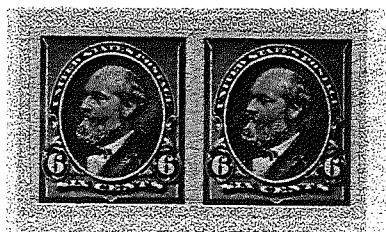
Brown Red



Dark Brown Red

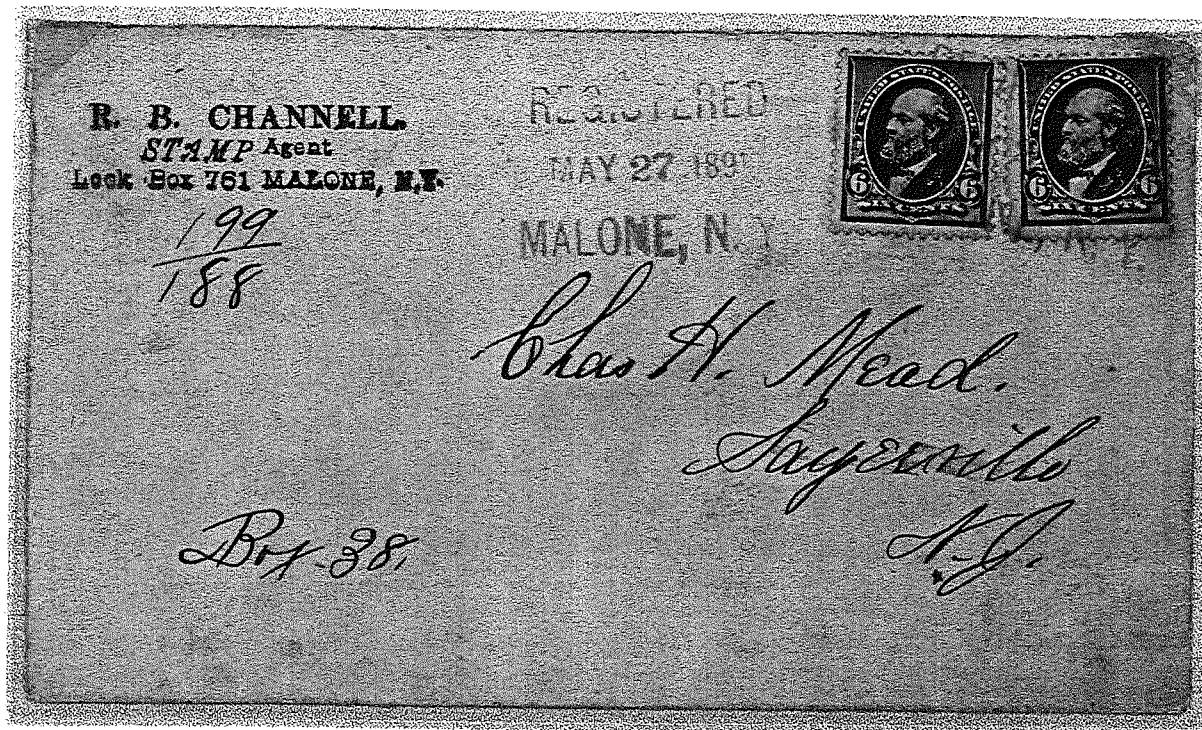


Plate Block



Imperforate Pair

Registry and First Class Usages



5/27/91 - Pre-1893 Registry Rate: Ten Cents Registry plus Two Cents First Class Rate

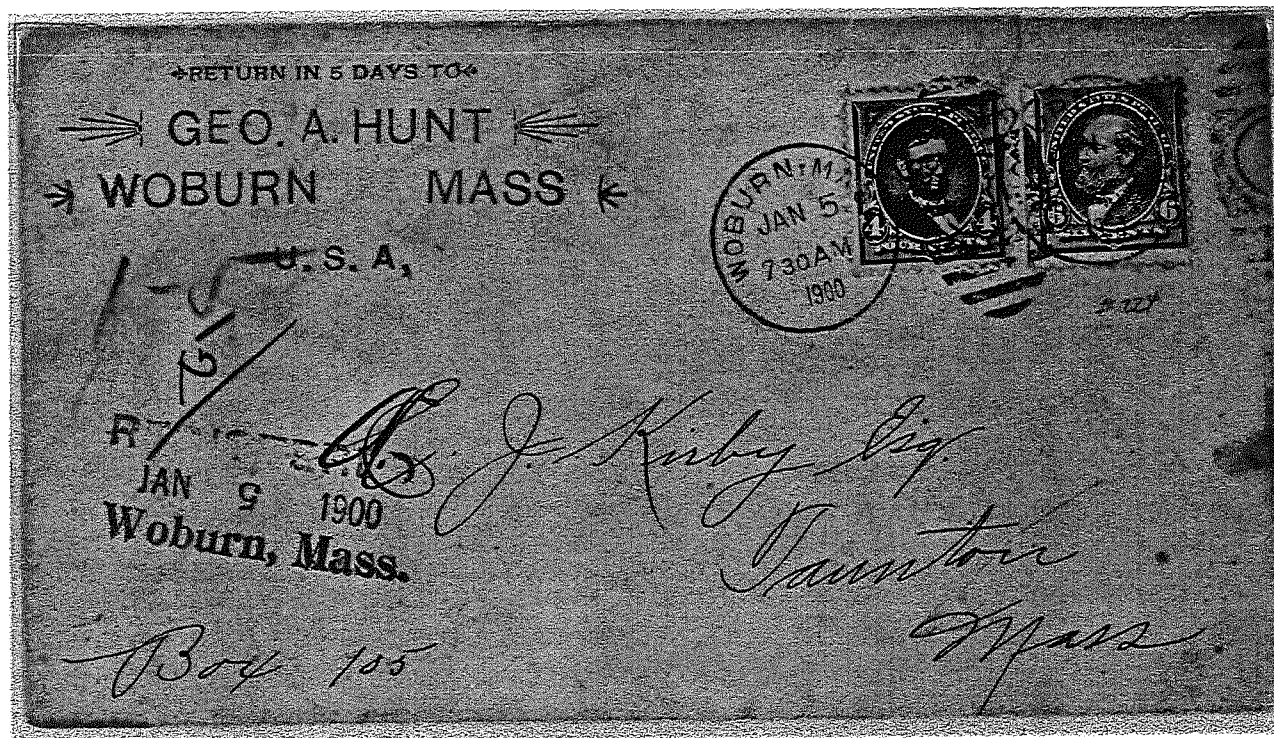


2/15/95 - Pays Triple First Class Rate

Domestic Registry Usages

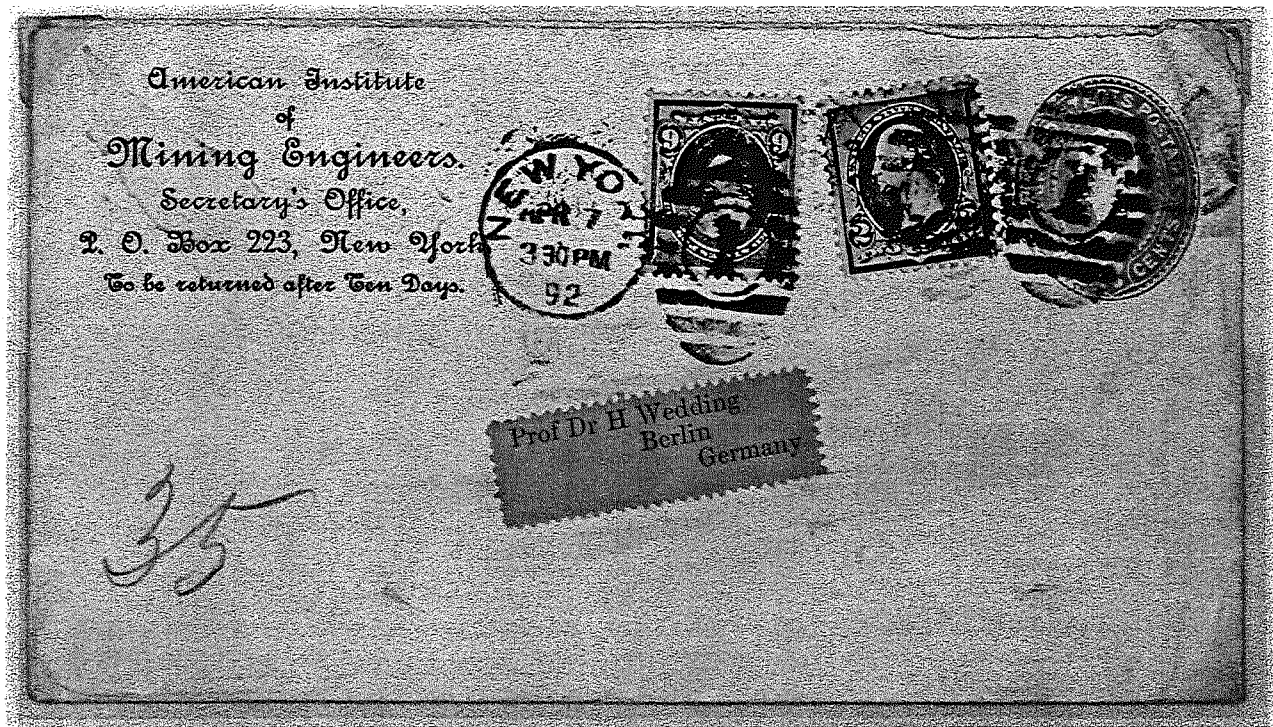


7/8/95 - Used with Two Cent First Bureau on Two Cent Entire for Post-1893 Registry plus First Class Domestic Rate

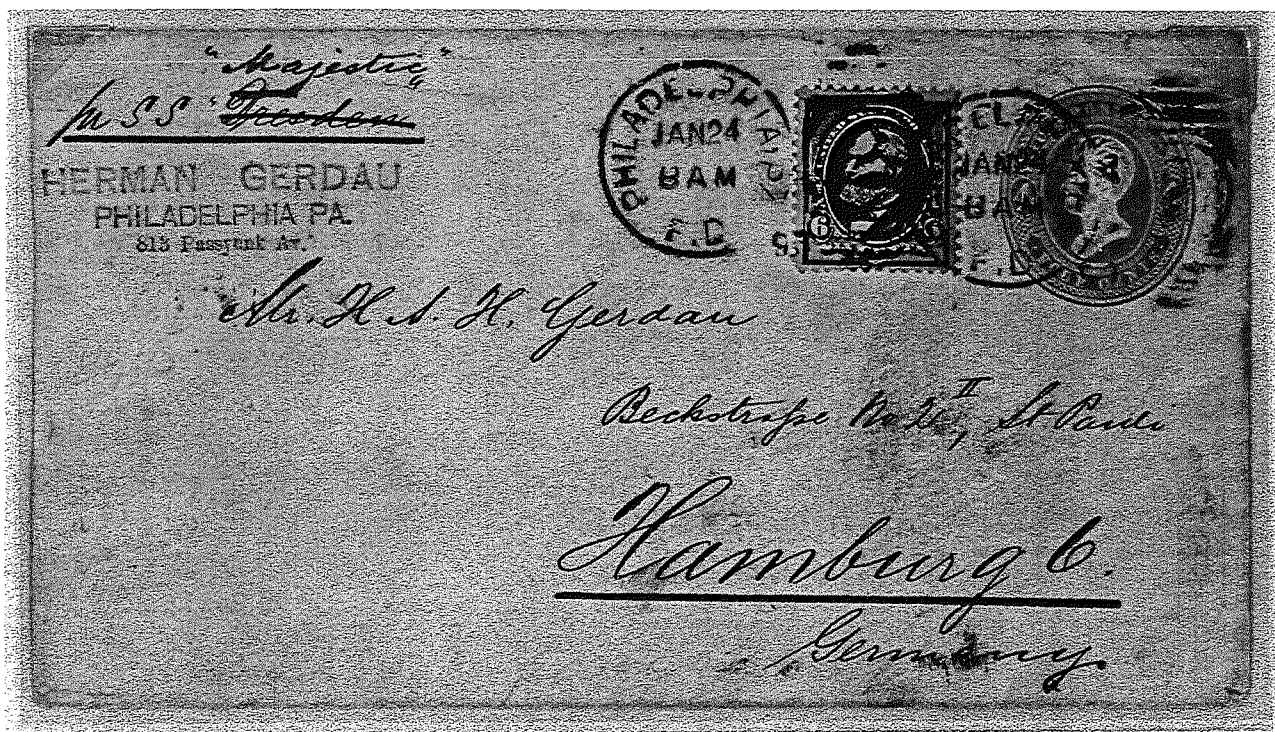


1/5/1900 - Used with Four Cent First Bureau (1898 Color) for Domestic Registry plus First Class

U.P.U. Usages



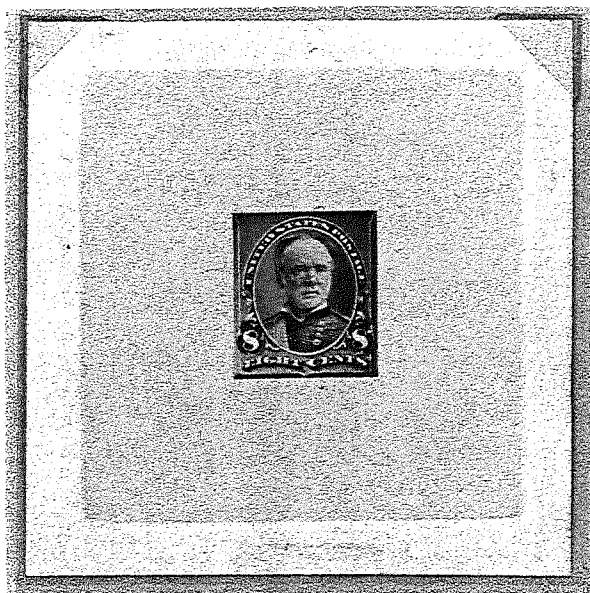
4/7/92 - Used with Two Cent Carmine on Two Cent Entire for double U.P.U. Rate to Germany



1/24/93 - Used on Four Cent Entire for double U.P.U. Rate to Germany

The Eight Cent Issue of 1890

Trial Color Proofs



Green



Salmon

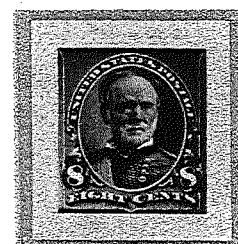
Proofs



Large Die Proof



India Paper Plate Proof



Small Die Proof



Cardboard Plate Proof

Issued: March 21, 1893
Earliest Known Usage: May 21, 1893
Most Common Usage: Domestic Registry
The Registry Rate was lowered from Ten Cents on 1/1/93

The Eight Cent Issue of 1890

The Issued Stamp



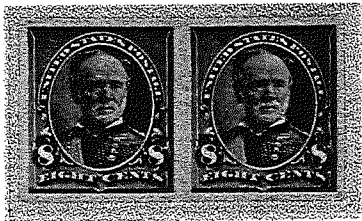
Lilac



Grayish Lilac

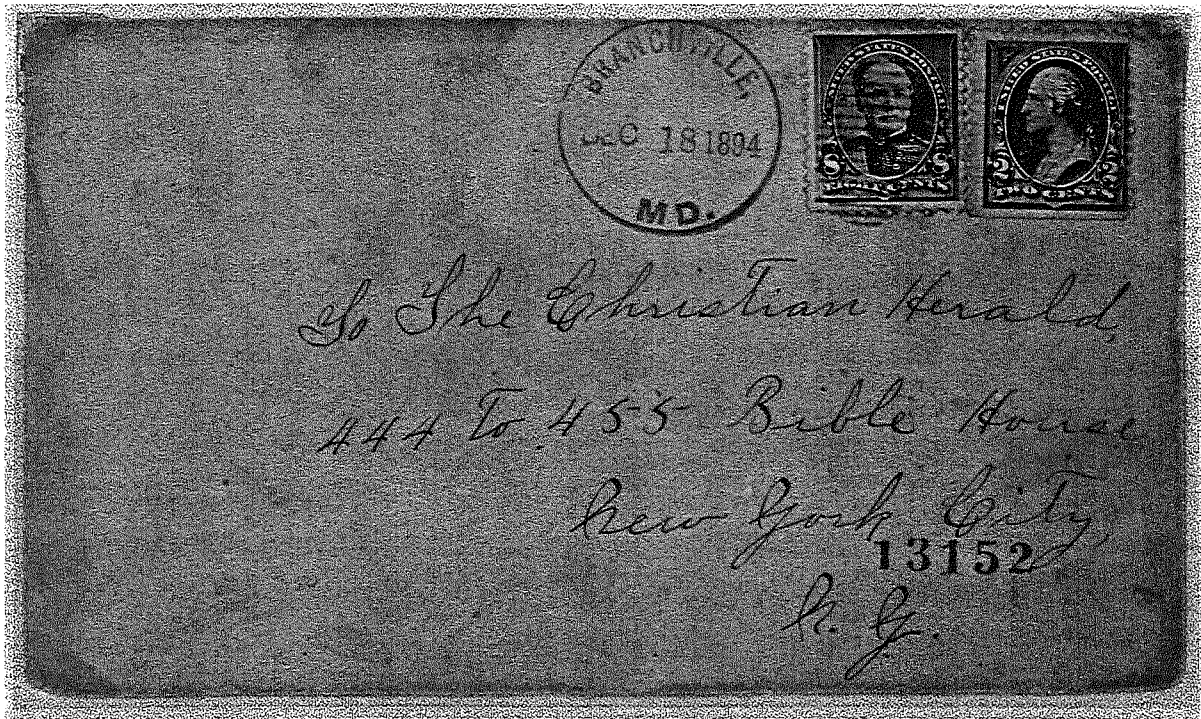


Plate Block of 10, Plate Number ZZ266
One of four known Plate Numbers

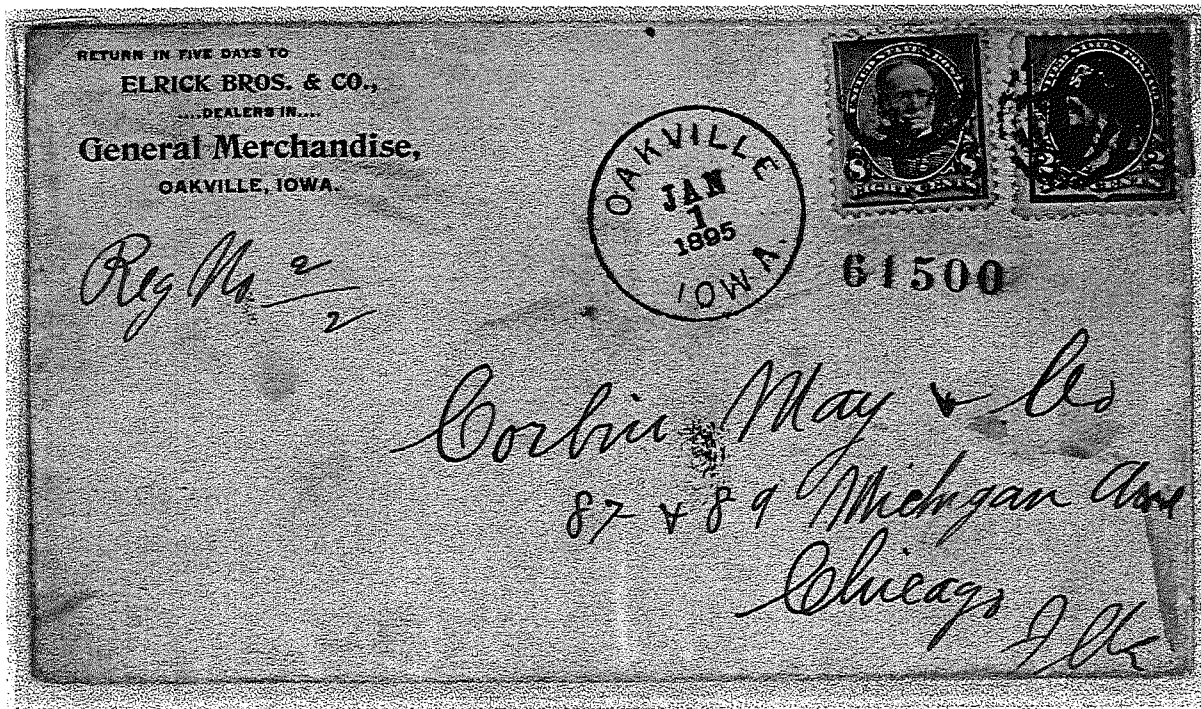


Imperforate Pair

Domestic Registry Usages

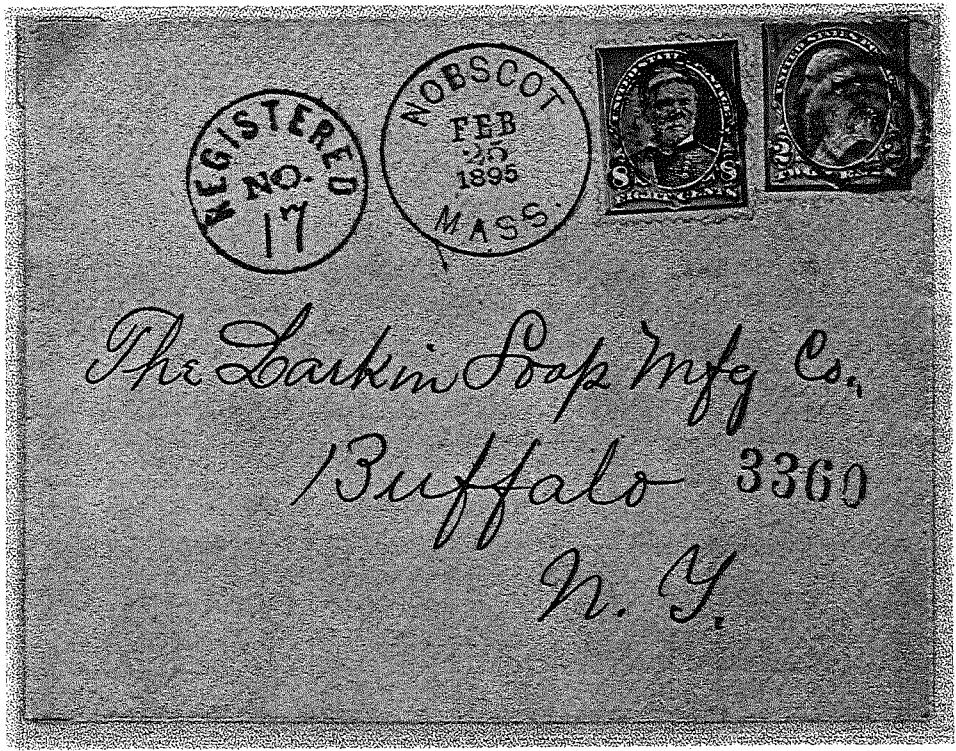


12/18/94 - Used with 1894 Two Cent (Type I)



1/1/95 - Used with 1890 Two Cent

Domestic Registry Usages



2/25/98 - Used with 1894 Two Cent (Type I - Pink)

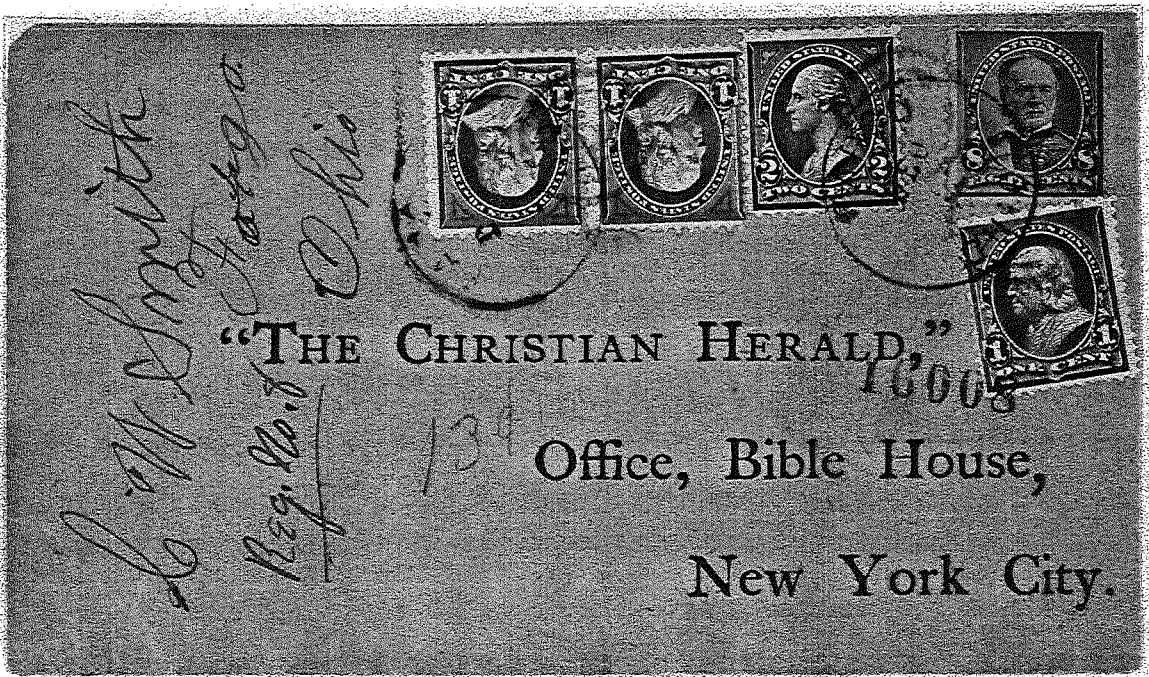


11/2/95 - Used with 1895 Two Cent (Type III) - Registry Rate plus Double First Class Rate
Reddish Carmine stamp on left also has re-cuts in hair, strengthened shading in shoulder, pre-cursors of Type IV

Domestic Registry Usages



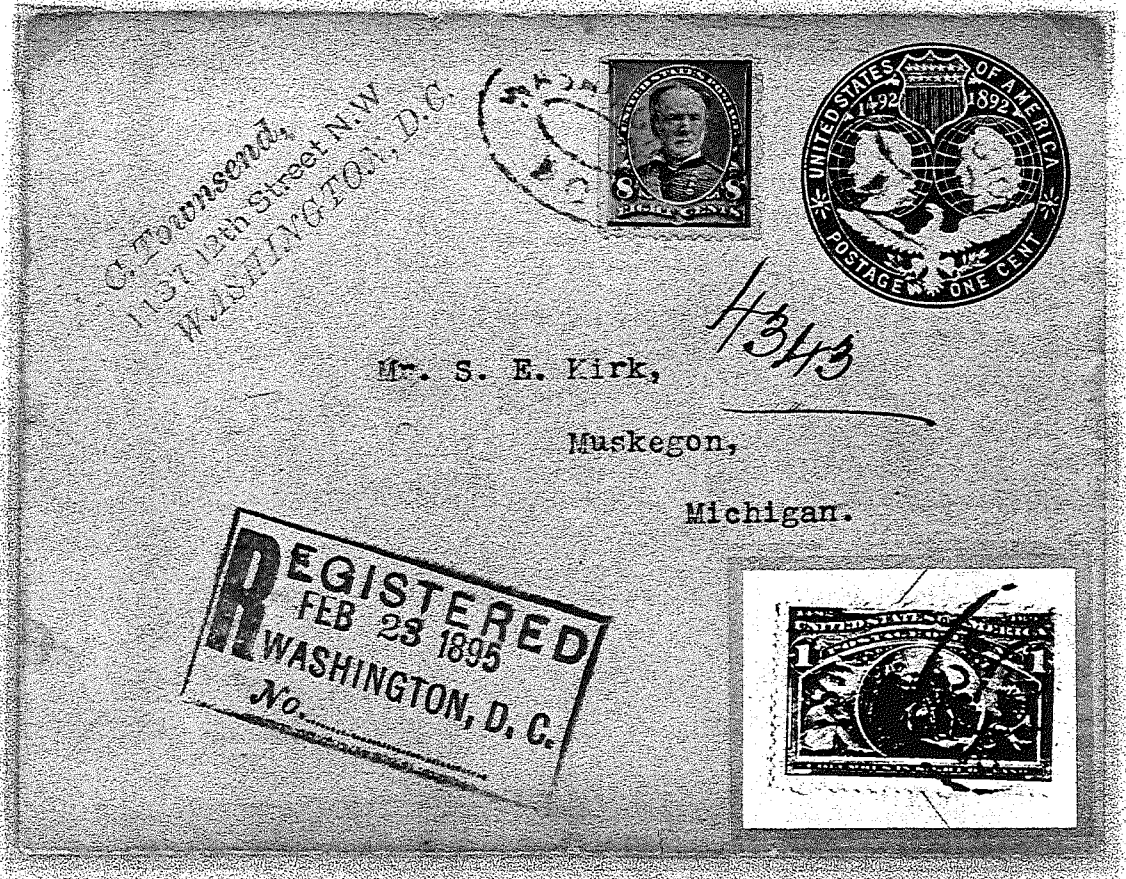
8/3/95 - Used with 1895 One Cent on Five Cent Entire, Registry plus Triple First Class



12/23/96 - Used with 1895 One Cent and Two Cent (Type III), Registry plus Five Times Fourth Class Rate

The Eight Cent Issue of 1890

Domestic and to Canada Registry Usages

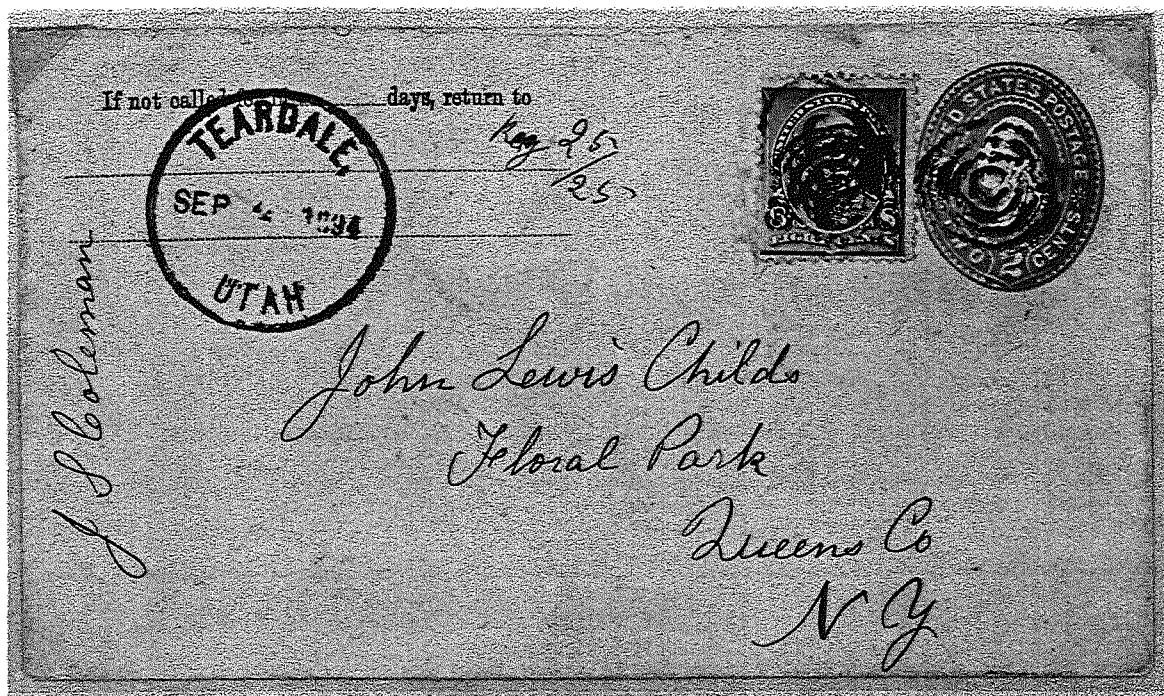


2/23/95 - Used on One Cent Entire with Columbian One Cent on back flap

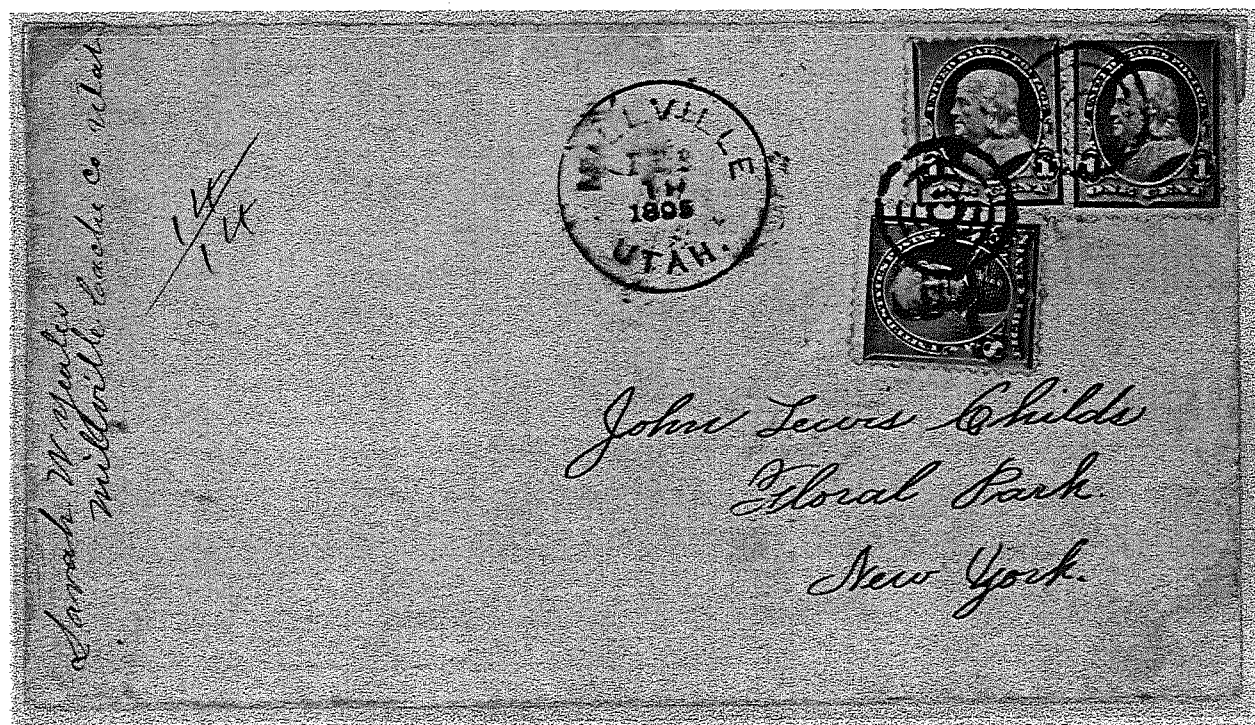


7/15/93 - Used on Two Cent Columbian Entire to St. Stephen, New Brunswick, Canada, per 7/1/85 Treaty

Domestic Registry Usages - Utah Territorial



9/4/94 - Used Two Cent Entire



2/19/95 - Used with (2) 1890 One Cent

The Eight Cent Issue of 1890

Domestic and Foreign Registry Usage



11/19/94 - Used on Two Cent Entire with Ten Cent First Bureau Issue
Earliest Known Usage of the 1894 Ten Cent

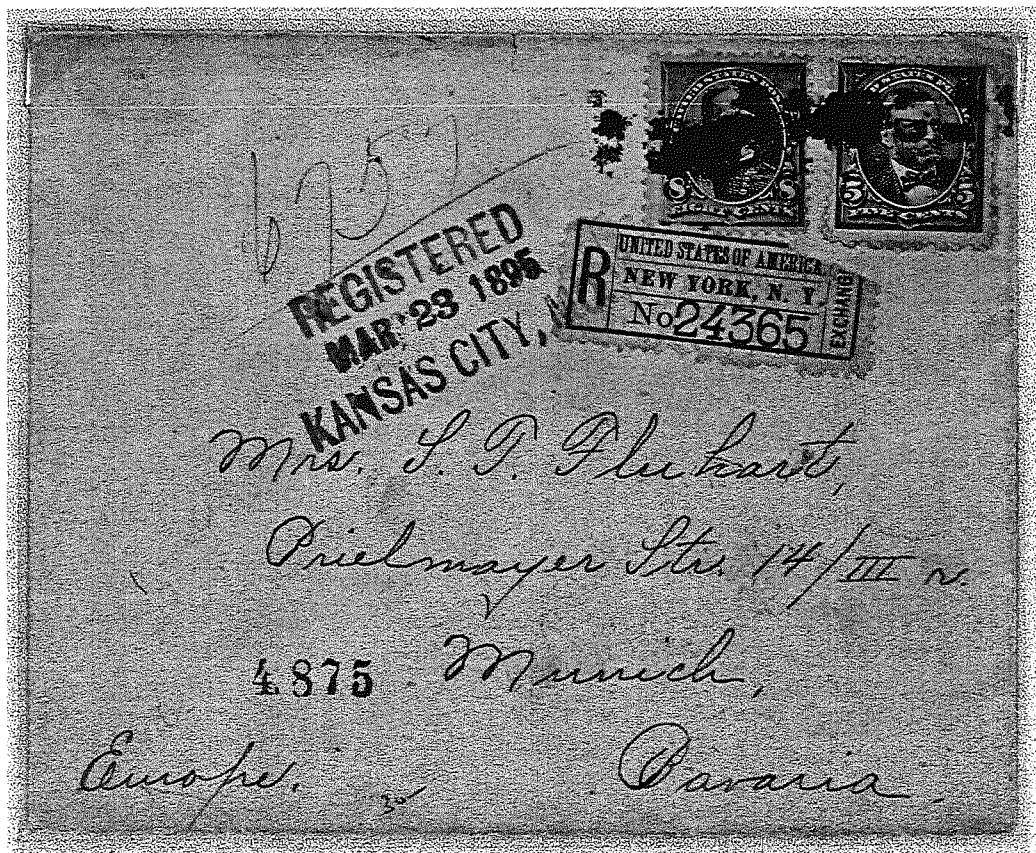


12/5/95 - Used with Ten Cent First Bureau, Double U.P.U. plus Registry Rate

Registry to Foreign Destinations



8/13/94 - Used with Columbian One Cent on Four Cent Entire
Registry plus U.P.U. to Budapest, Austria-Hungary

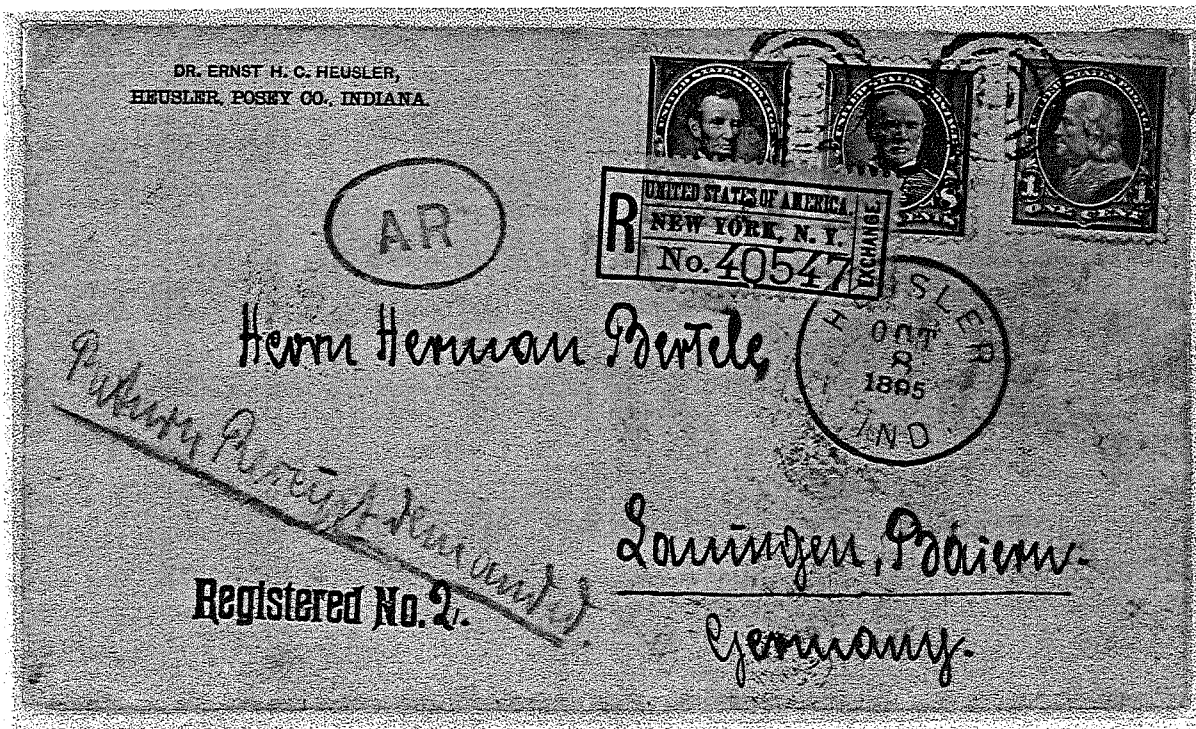


3/23/95 - Used with 1894 Five Cent, Registry plus U.P.U. Rate to Munich, Bavaria

Registry to Foreign Destinations

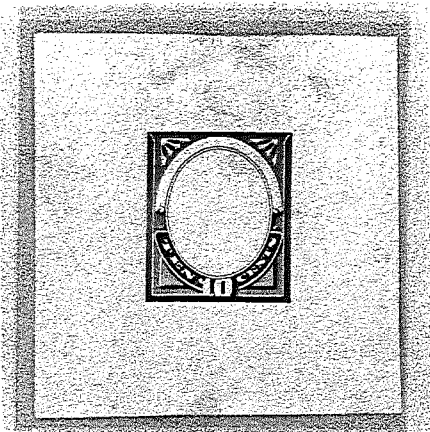


5/3/95 - Used on Five Cent Entire to Funchal, Madeira
Eight Cents Registry plus Five Cents U.P.U.



10/8/95 - Used with 1895 One and Four Cent to Germany

Essay and Proofs



Frame Essay unused in final design



Large Die Proof



Small Die Proof



Cardboard Plate Proof



India Paper Plate Proof, Plate #E30, one of four known Plate Numbers

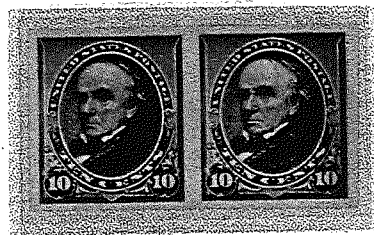
Issued: February 22, 1890
Earliest Known Usage: April 25, 1890
Most Common Usage: Domestic Registry
The Registry Rate was Ten Cents until 1/1/93

The Issued Stamp



The Issued Stamp

PFC 74356



Imperforate Pair



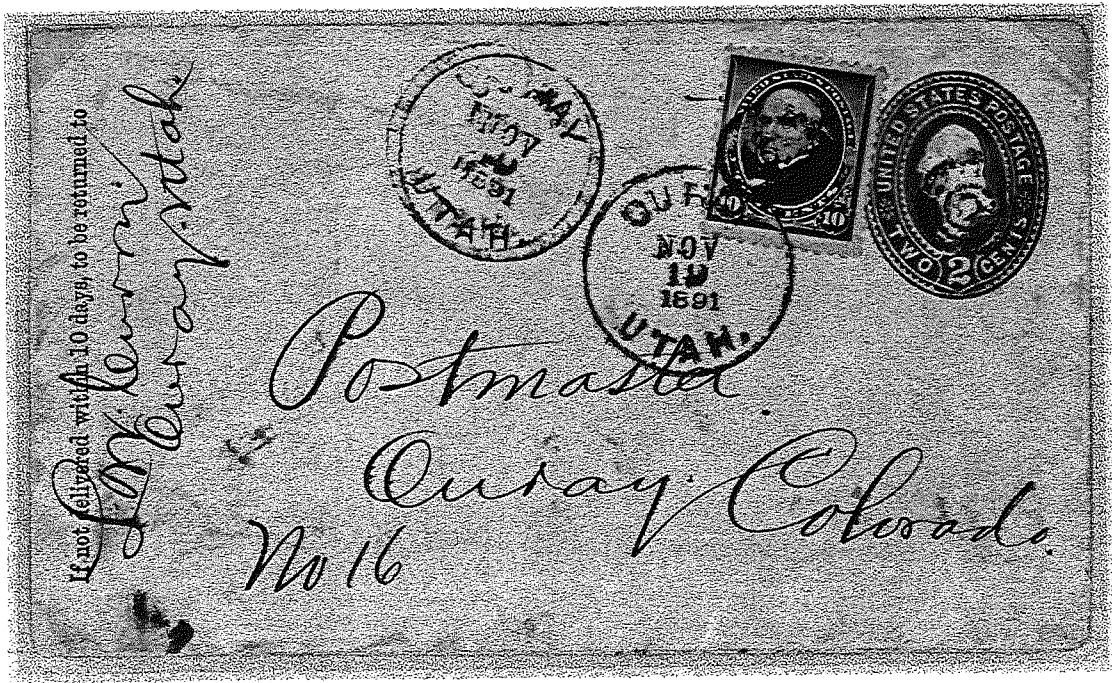
Block of Eight, Plate Number E26

The Ten Cent Issue of 1890

Pre-January 1, 1893 Domestic Registry Usages



10/25/90 - Used with 1890 Two Cent Carmine
Ten Cents Registry plus First Class Rate



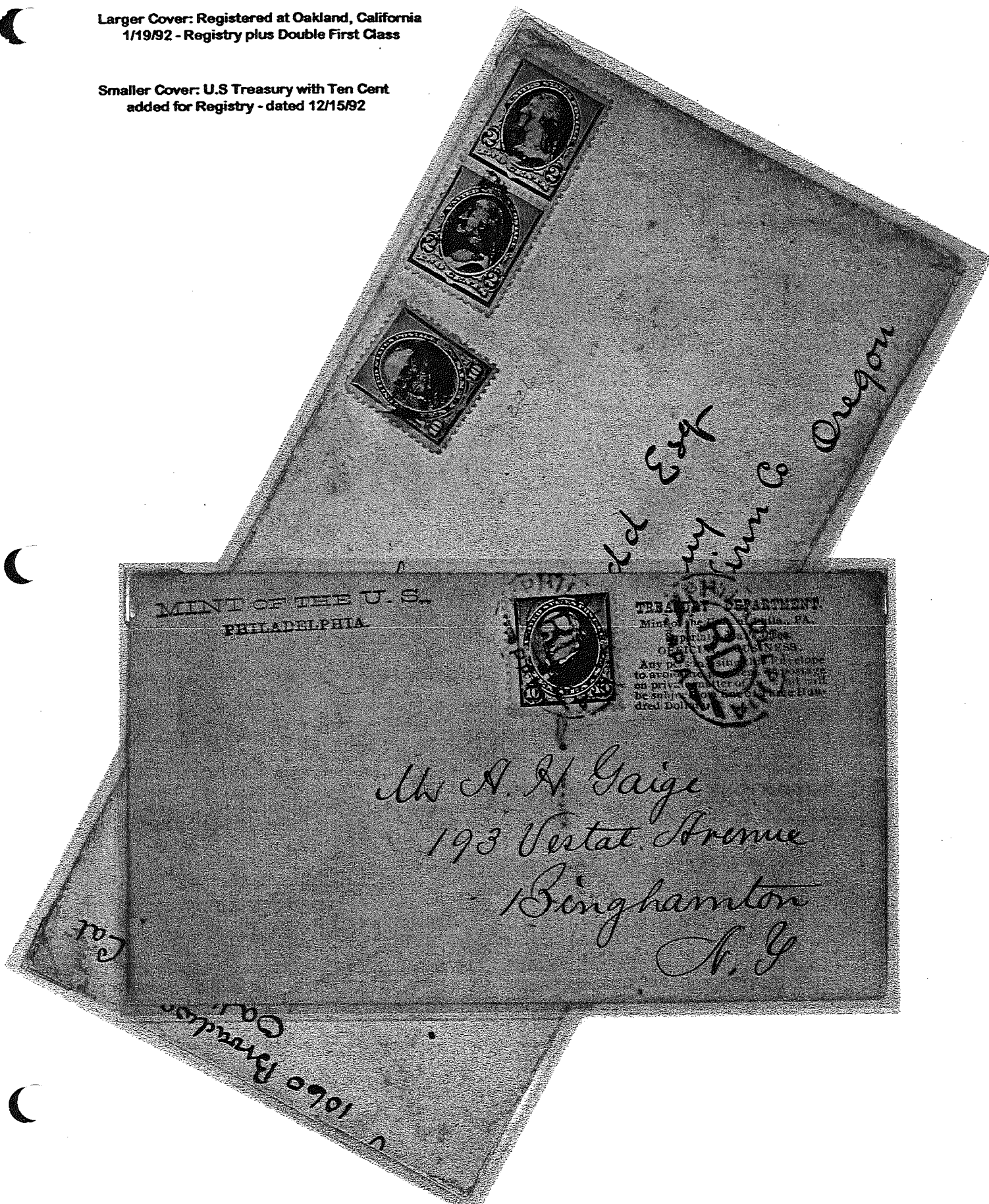
11/19/91 - Used on Two Cent Entire
Ouray, Utah to Ouray, Colorado

The Ten Cent Issue of 1890

Pre-January 1, 1893 Domestic Registry Usages

Larger Cover: Registered at Oakland, California
1/19/92 - Registry plus Double First Class

Smaller Cover: U.S Treasury with Ten Cent
added for Registry - dated 12/15/92

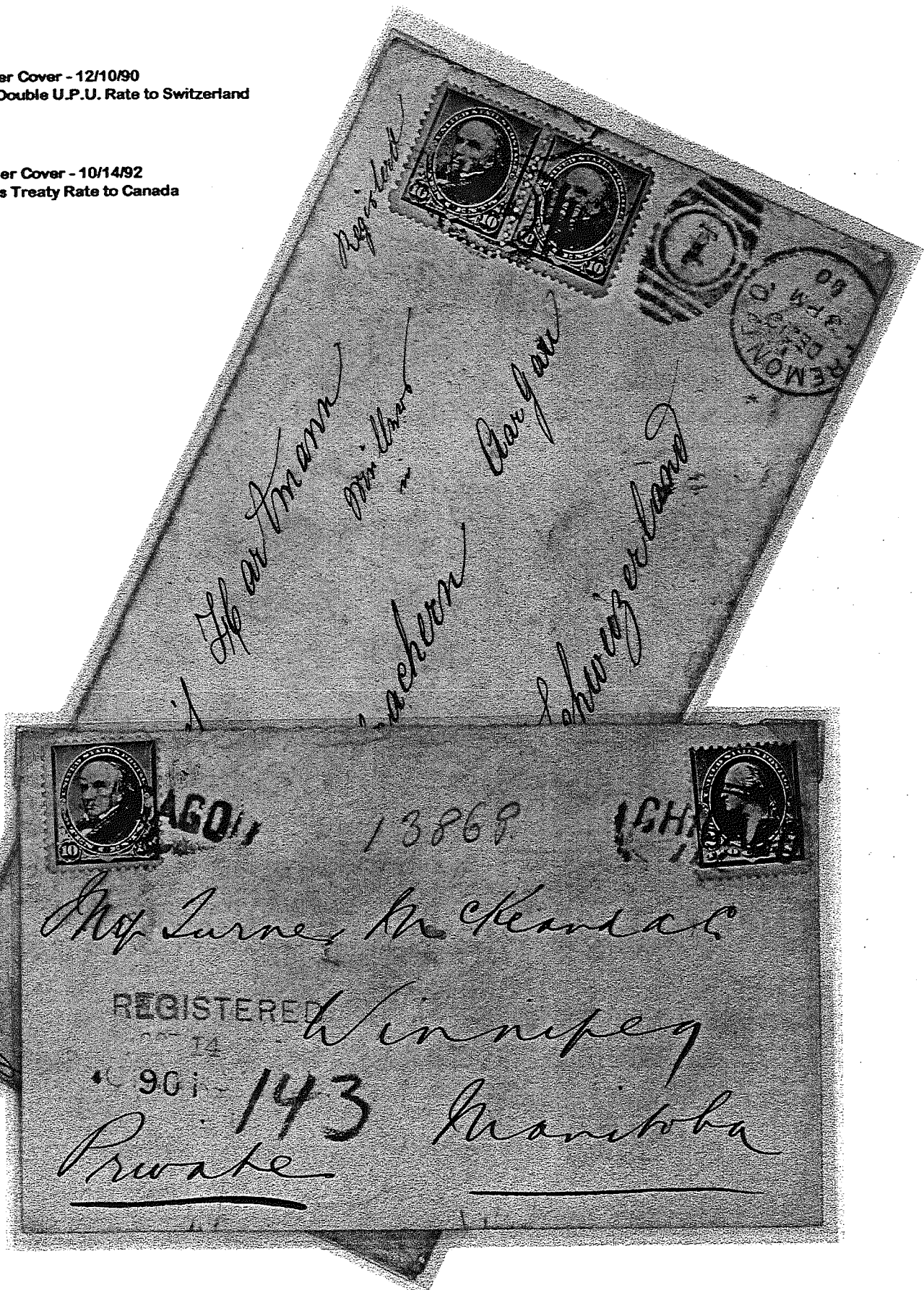


The Ten Cent Issue of 1890

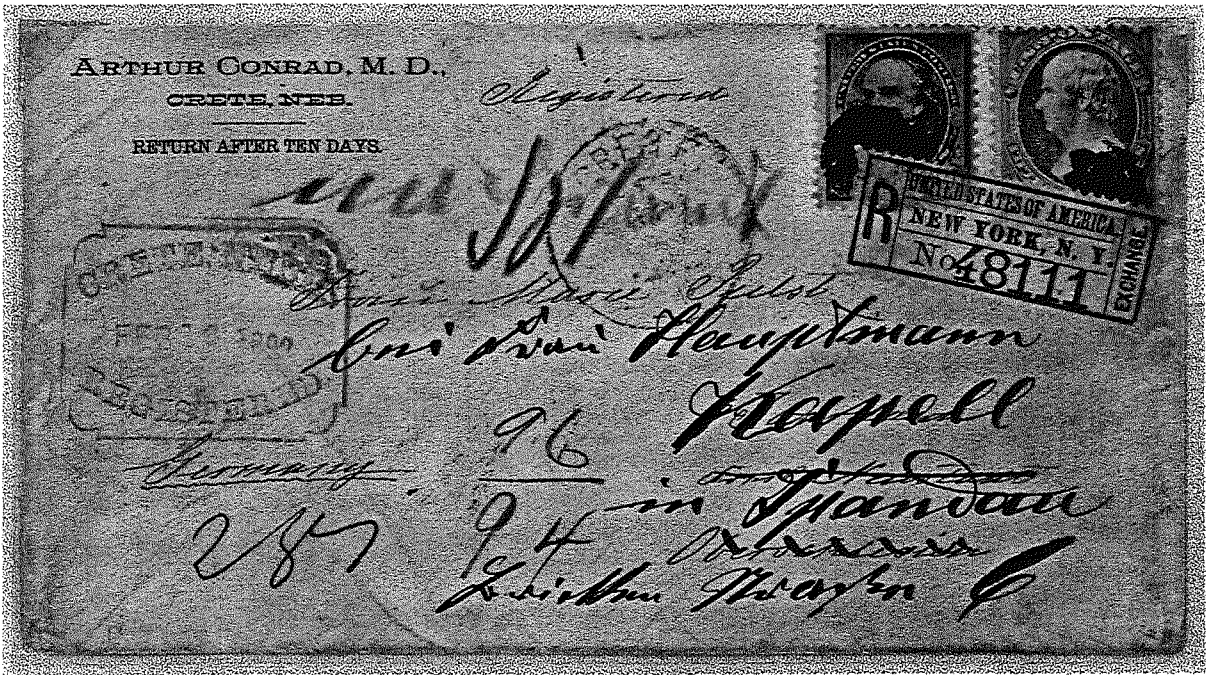
Pre-January 1, 1893 Foreign Registry Usage

Larger Cover - 12/10/90
Registry plus Double U.P.U. Rate to Switzerland

Smaller Cover - 10/14/92
Registry plus Treaty Rate to Canada



Pre-January 1, 1893 Foreign Registry Usage



2/16/92 - Used with 1879 Fifteen Cent to Germany, forwarded there
Registry plus Triple U.P.U. Rate



11/19/92 - Used with 1890 One, Two and Three Cents on Two Cent Entire
Registry plus Double U.P.U. Rate

The Ten Cent Issue of 1890

Post-January 1, 1893 Domestic Registry Usage

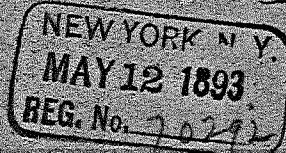
All demonstrate Eight Cent Registry plus Two Cents First Class Rate

*Registered by Alfred E. Coe
No. 55, Second Avenue, New York City*



Mrs. Jenny I. Briggs

Packskill, Westchester Co. N. Y.



No. 125 Union Avenue

New York State

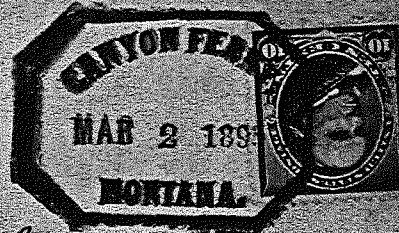
PEABODY HOTEL



1897

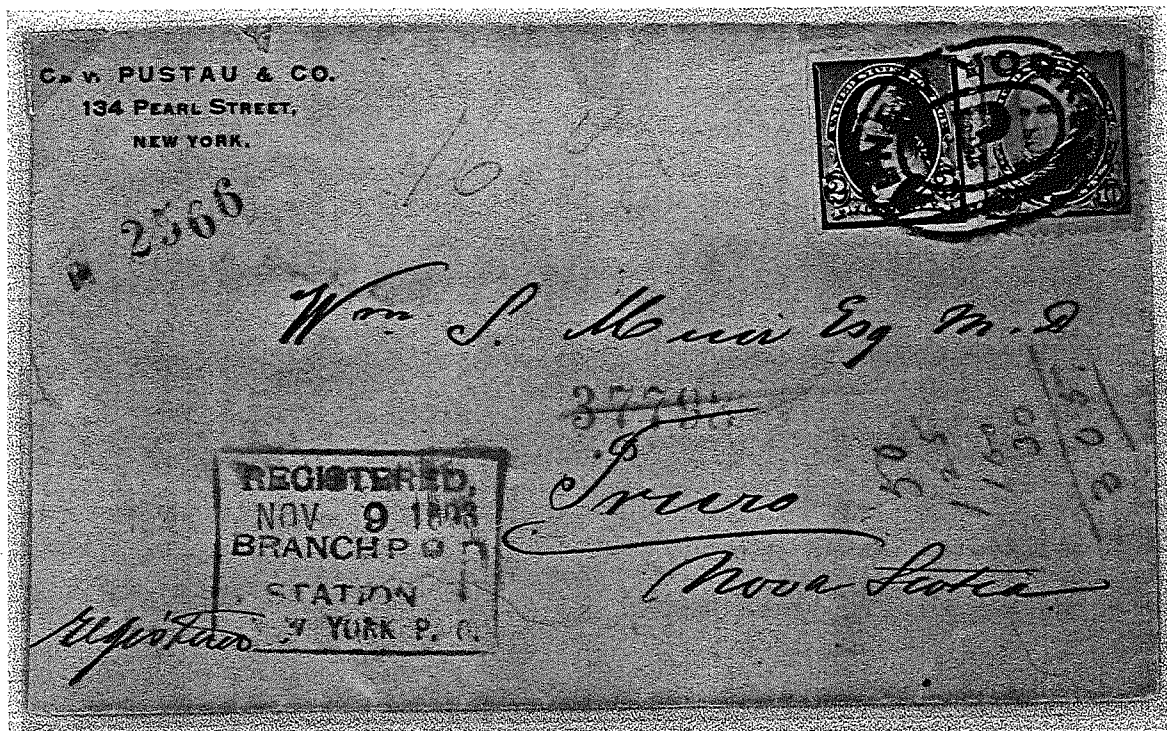
Mrs. Chas. S. May

*Registered by
Lora M. Blackwell
At Canyon Ferry Mont.*

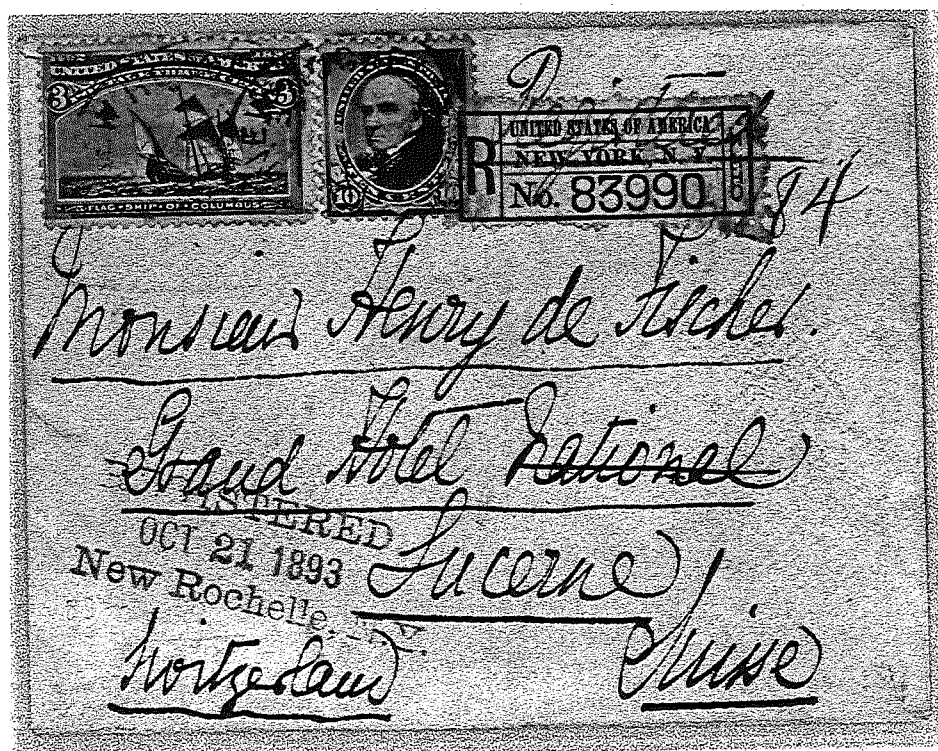


*John Lewis Childs,
Floral Park,
Queens Co., New York.*

Post-January 1, 1893 Treaty/Foreign Registry Usage

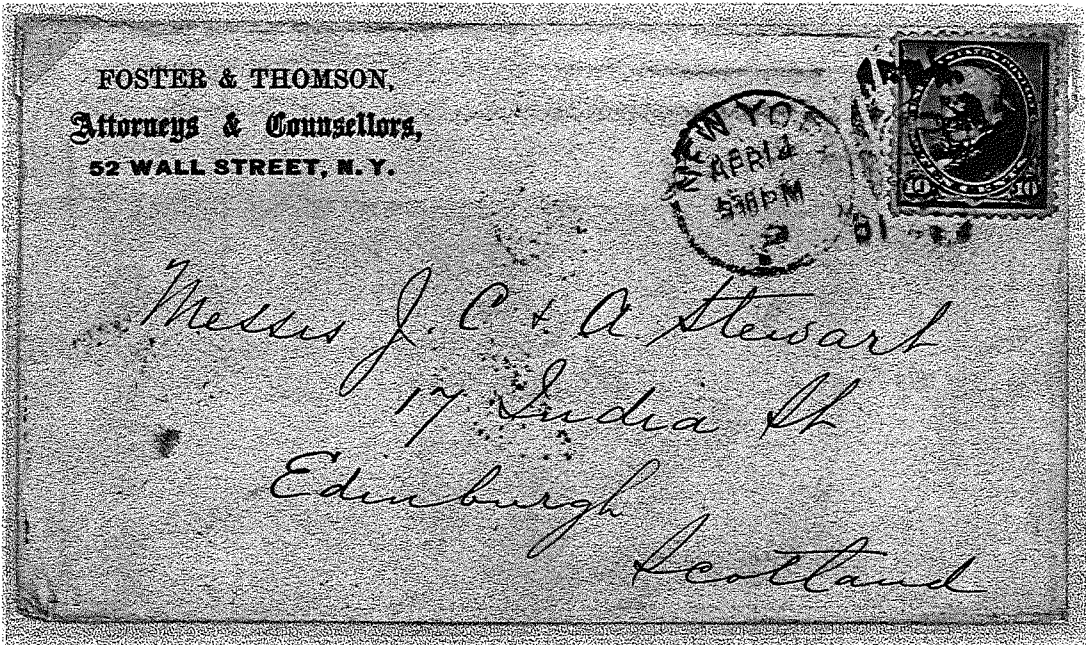


11/9/93 - Canada Treaty Rates: Eight Cents Registry plus Double First Class Rate

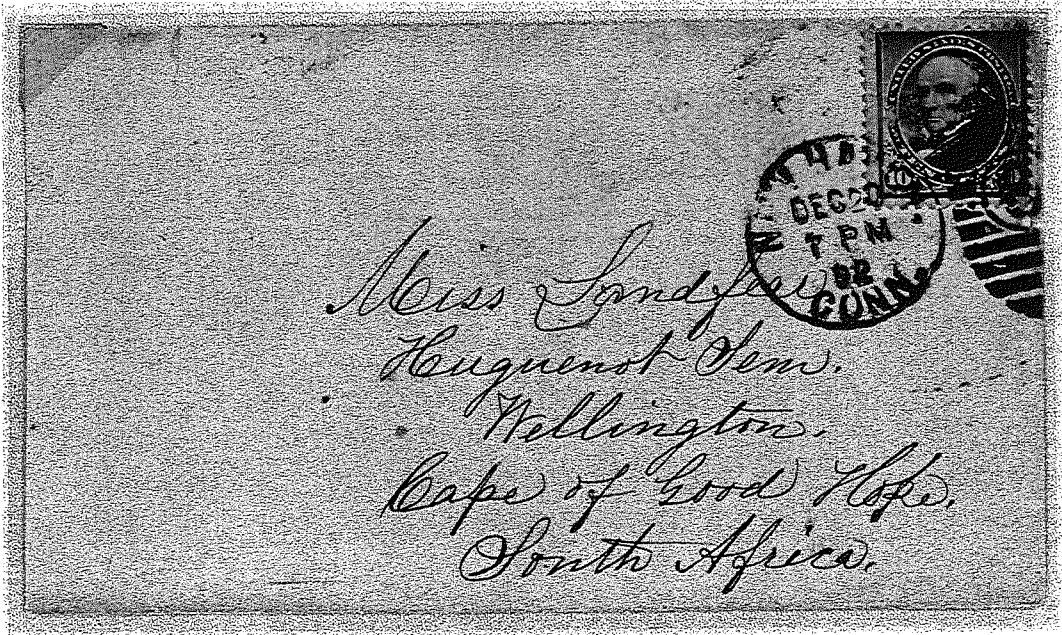


11/21/93 - Used with Columbian Three Cent
Registry plus U.P.U. to Switzerland

Foreign Destination Usage



4/14/91 - Double U.P.U. Rate to Edinburgh, Scotland



12/20/92 - Double U.P.U. to Cape of Good Hope

The Ten Cent Issue of 1890

Foreign Destination Usage



10/9/90 - Twelve Cents per 1/2 Ounce pre-U.P.U. Rate to Melbourne, Australia, forwarded there

Used from Samoa



5 1/2 Pence Registry Rate from Samoa to San Francisco (received 8/31/94)
Thirteen Cents (Registry plus U.P.U.) from San Francisco to England (received 9/15/94)

Proofs



Large Die Proof



Small Die Proof



India Paper Plate Proof



Cardboard Plate Proof

**Issued: February 22, 1890
Earliest Known Usage: May 27, 1890
Most Common Usage: Mixed Usages**

The Issued Stamp

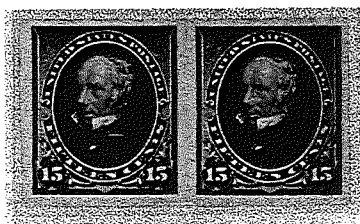
PFC 177772



The Issued Stamp



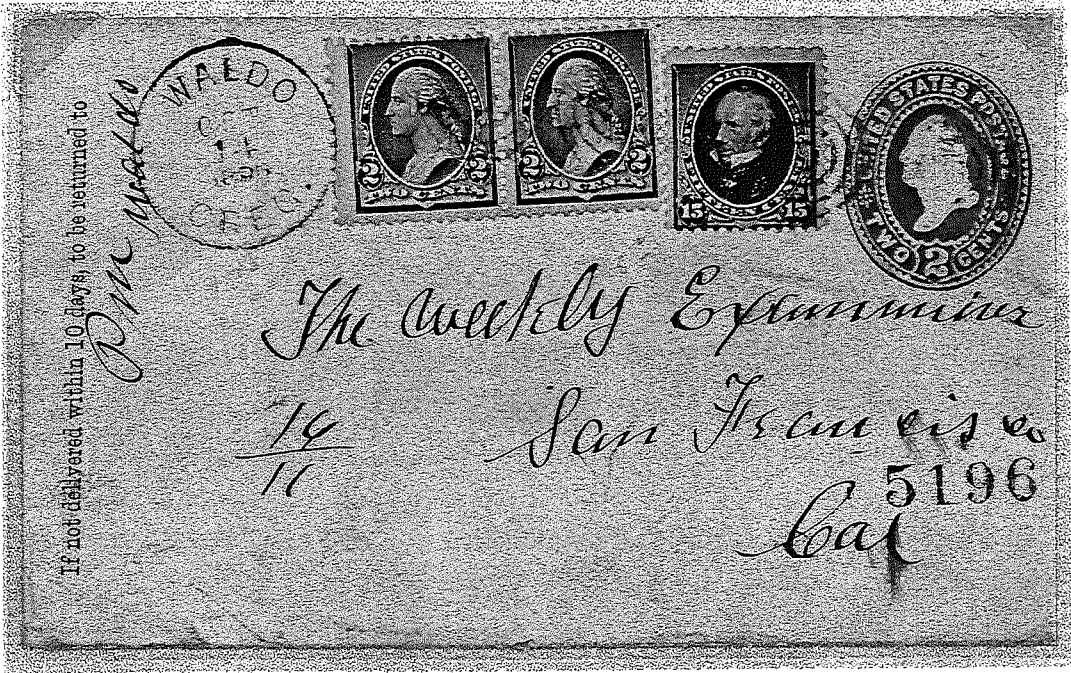
Plate Block of 10, only known Plate Number



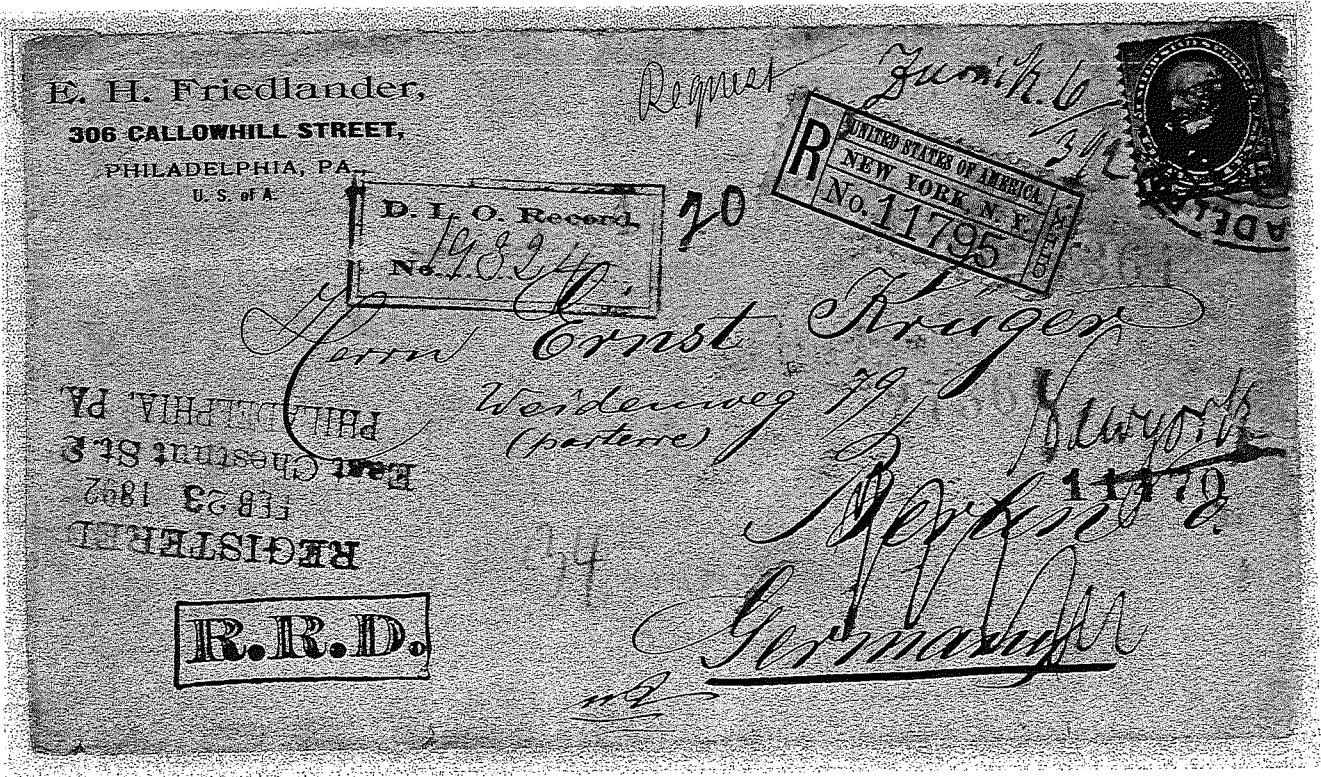
Imperforate Pair

The Fifteen Cent Issue of 1890

Registry: Domestic and Solo Foreign Destination



10/14/90 - Used with 1890 Two Cents on Two Cent Entire
Pre-1893 Registry plus Triple First Class Rate



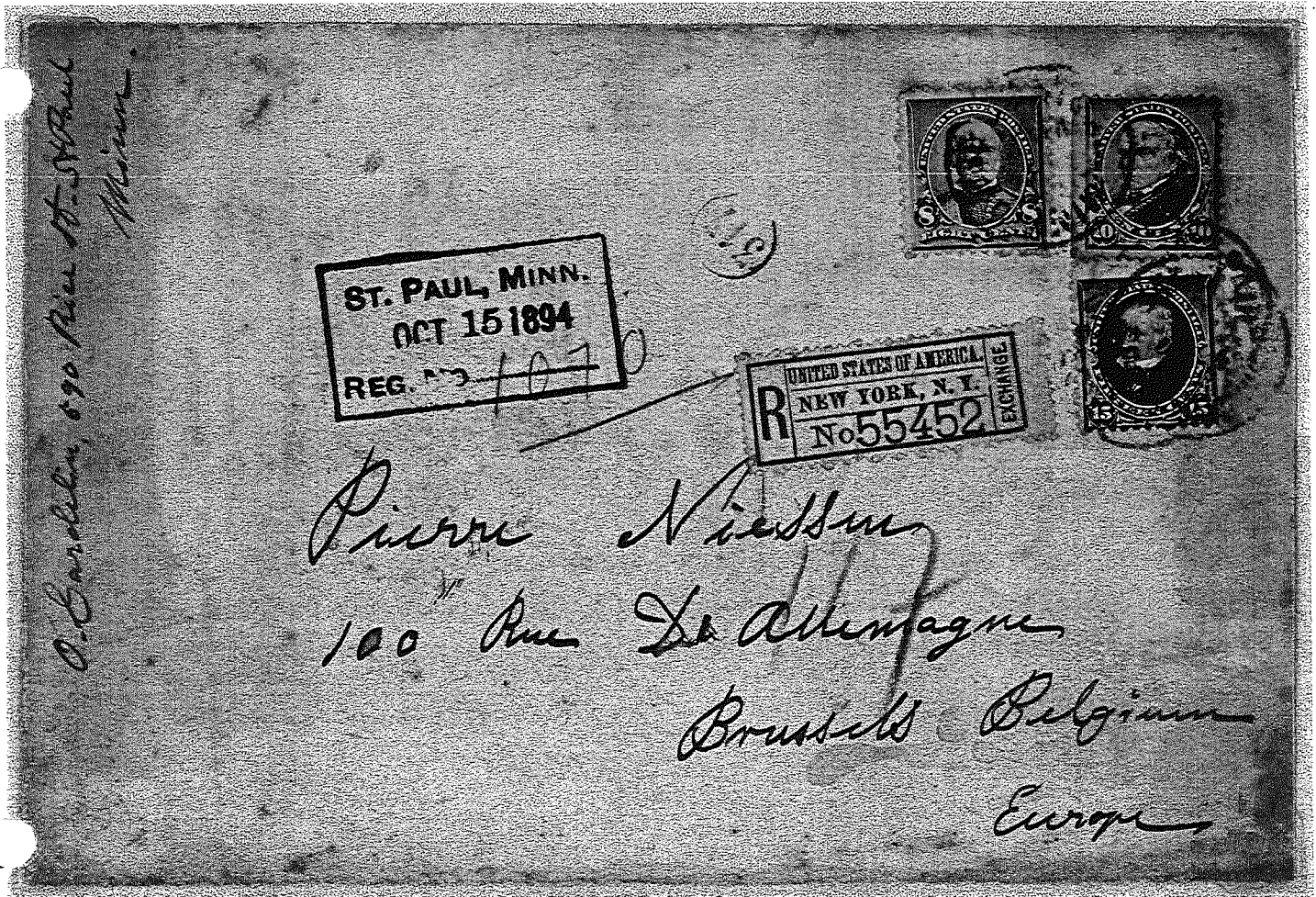
2/23/92 - Pre-1893 Registry plus U.P.U. Rate to Germany

The Fifteen Cent Issue of 1890

Registry: Domestic and to Foreign Destination



5/1/97 - "Received in Poor Order", Officially Sealed and wax seal on reverse - Registry plus Multiple Fees



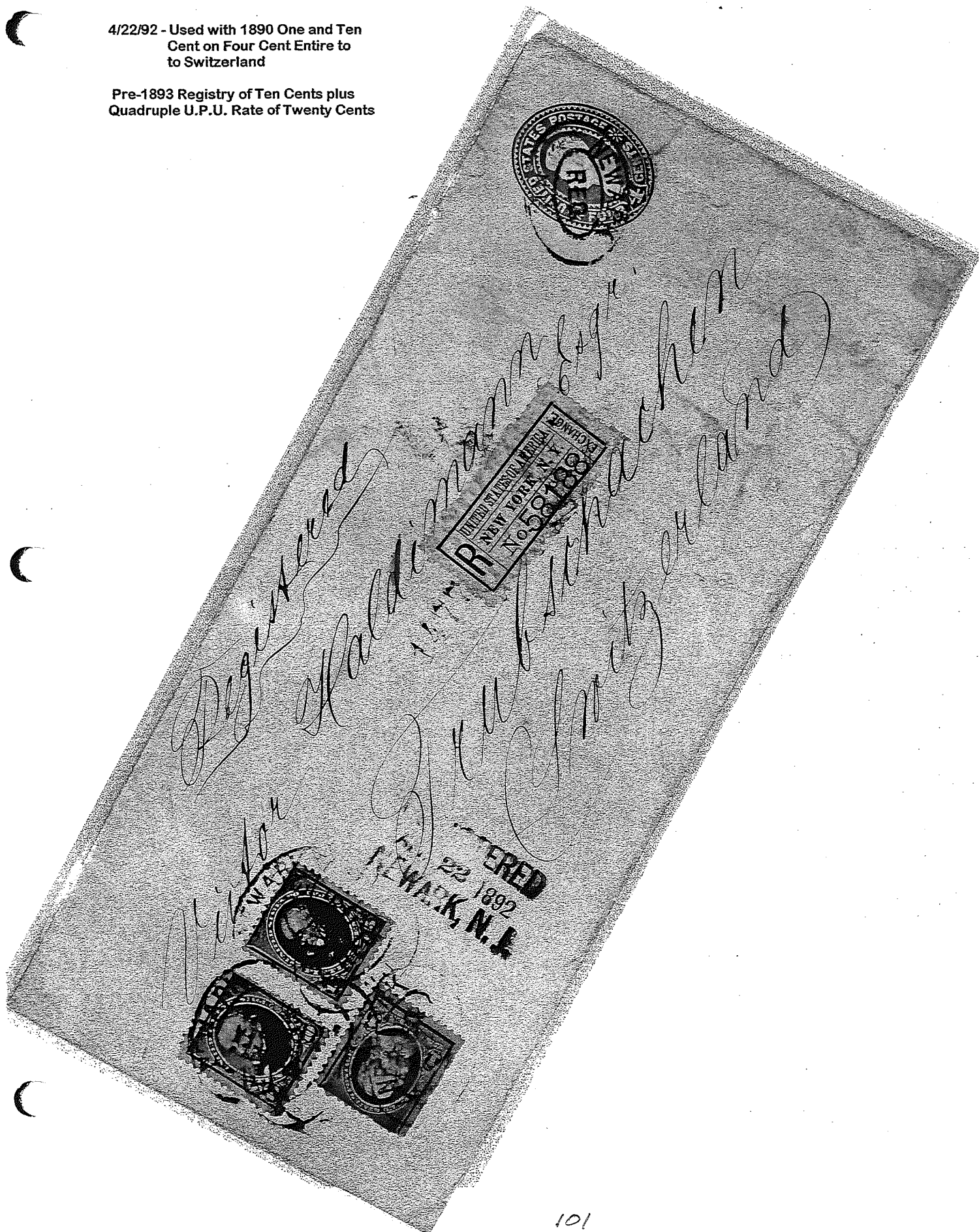
10/15/94 - Used with 1890 Eight and Ten Cents for post-1893 Registry plus Five Times U.P.U. to Belgium

The Fifteen Cent Issue of 1890

Registry to Foreign Destination

4/22/92 - Used with 1890 One and Ten
Cent on Four Cent Entire to
to Switzerland

Pre-1893 Registry of Ten Cents plus
Quadruple U.P.U. Rate of Twenty Cents

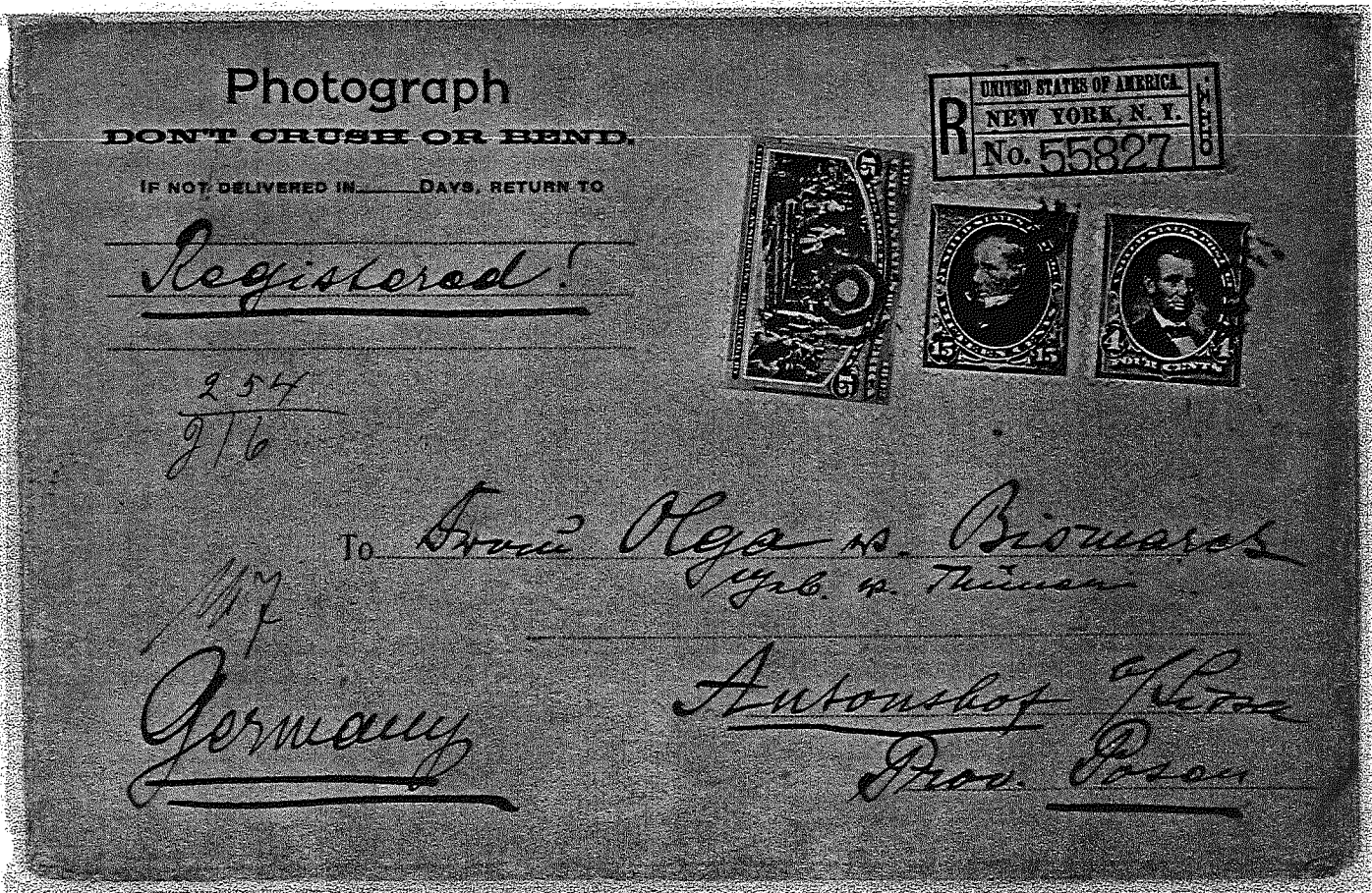


The Fifteen Cent Issue of 1890

Registry to Foreign Destinations



9/21/93 - Used with (3) One Cent Columbians on Reverse = Eight Cents Registry plus Quadruple U.P.U.



11/29/93 - Used with 1890 Four Cent and Fifteen Cent Columbian overpays Five Times U.P.U. Rate

Foreign Destination



4/14/94 -
Used with 1890 Three Cent
on Two Cent Entire.

Pays Quadruple U.P.U. Rate
to Germany

Proofs



Large Die Proof



India Paper Plate Proof, Plate #24, only known Plate Number



Small Die Proof



Cardboard Plate Proof

Issued: February 22, 1890
Earliest Known Usage: June 28, 1890
Most Common Usage: Mixed Usages

The Issued Stamp



The Issued Stamp



Postal Agency
Shanghai Cancel



Rejoined Plate Block of 10, only known Plate Number

PFC 139663



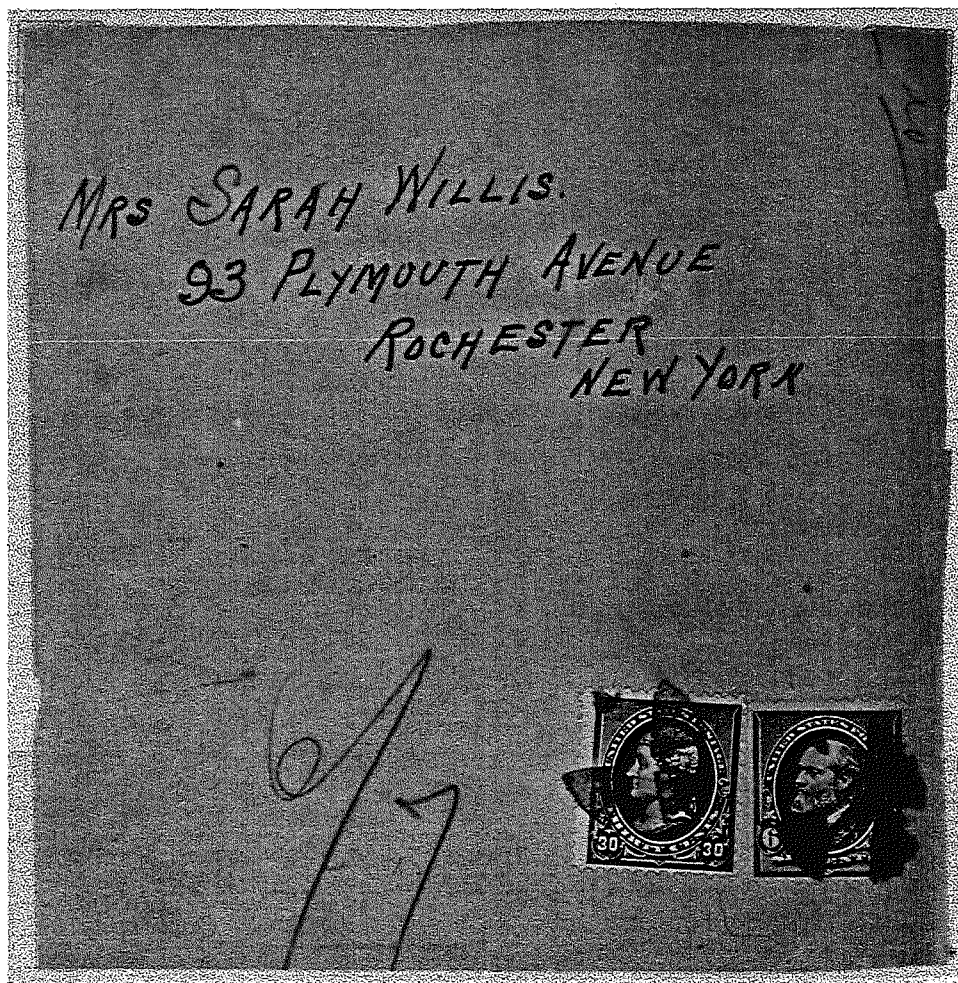
Imperforate Pair

The Thirty Cent Issue of 1890

Usages on Wrapper



Strip of Five and Pair tied to piece with purple New York Oval strikes

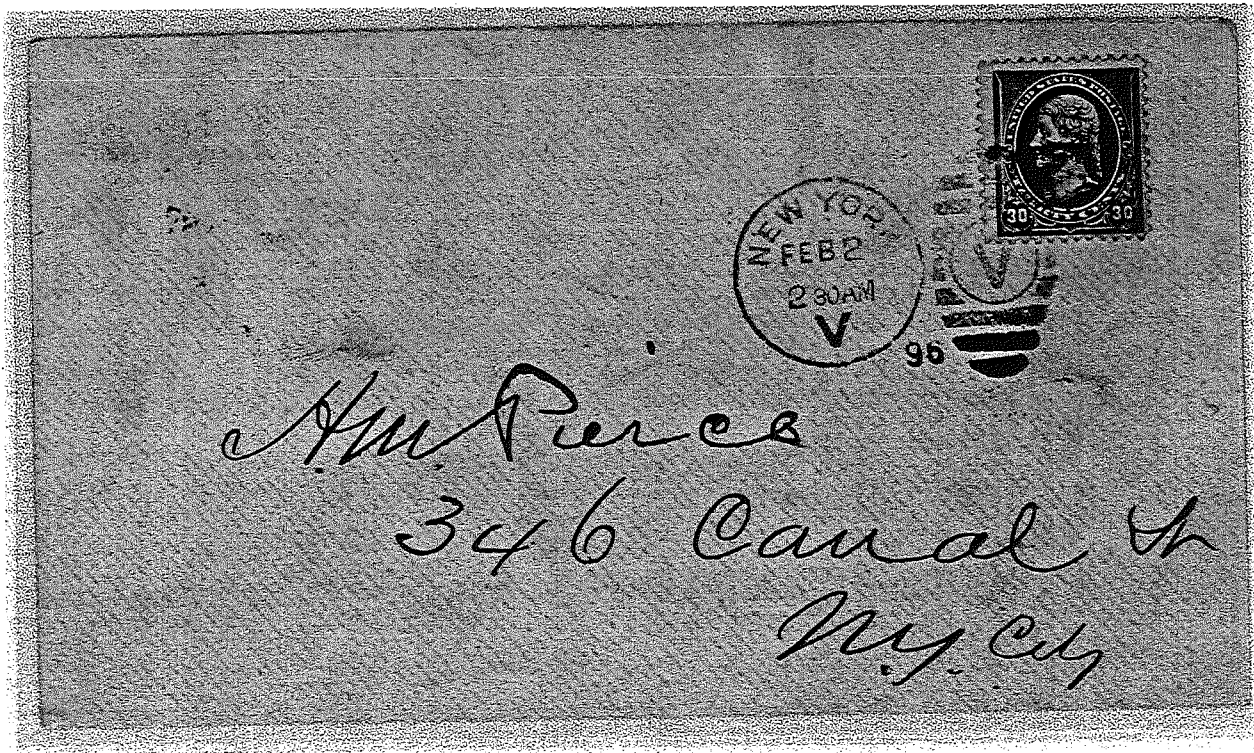


Used with 1890 Six Cent on wrapper piece

On Cover Usages

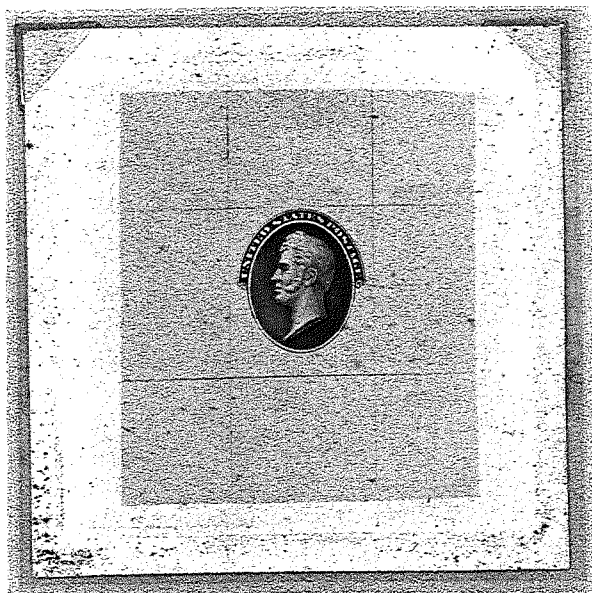


6/29/90 - Earliest Known Usage
Triple U.P.U. Rate plus Supplementary Usage to Germany



2/2/96 - Local usage in New York City

Essay and Proofs



Essay of the Vignette



Large Die Proof



Small Die Proof



India Paper Plate Proof



Cardboard Plate Proof

**Issued: February 22, 1890
Earliest Known Usage: February 17, 1892
Most Common Usage: Mixed Usages**

The Ninety Cent Issue of 1890

The Issued Stamp

PFC 112394

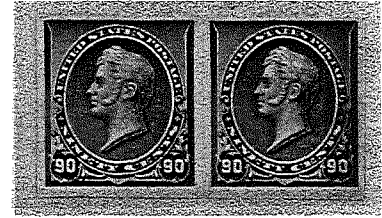


The Issued Stamp



Unused Block of Four

DNP 13582



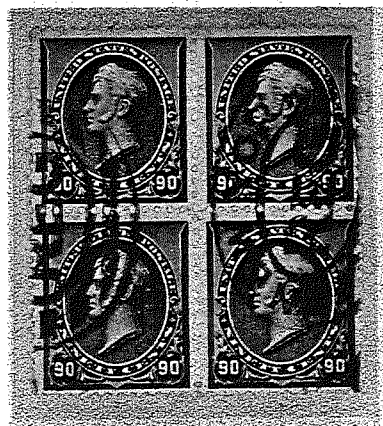
Imperforate Pair



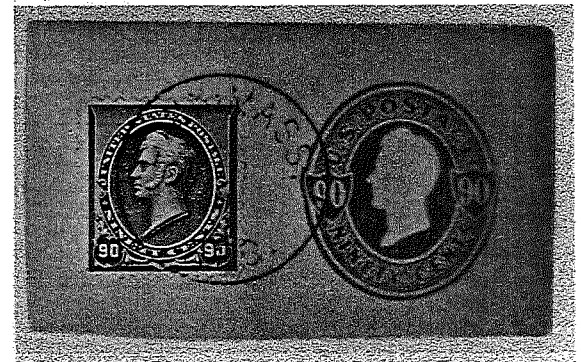
Plate Block of 10 - Plate # 25, only plate number known



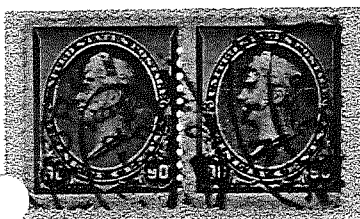
Canal Zone Cancel
Pre-overprint Usage



New York Registry Cancels



Lynn, Massachusetts Registry Marking



Cancel Date: 3/26/92

On Piece Usage



8/13/92 - Used with 1890 Fifteen Cents on Registered Large Cover to Germany
Pre-1893 Registry Rate plus Nineteen times U.P.U.

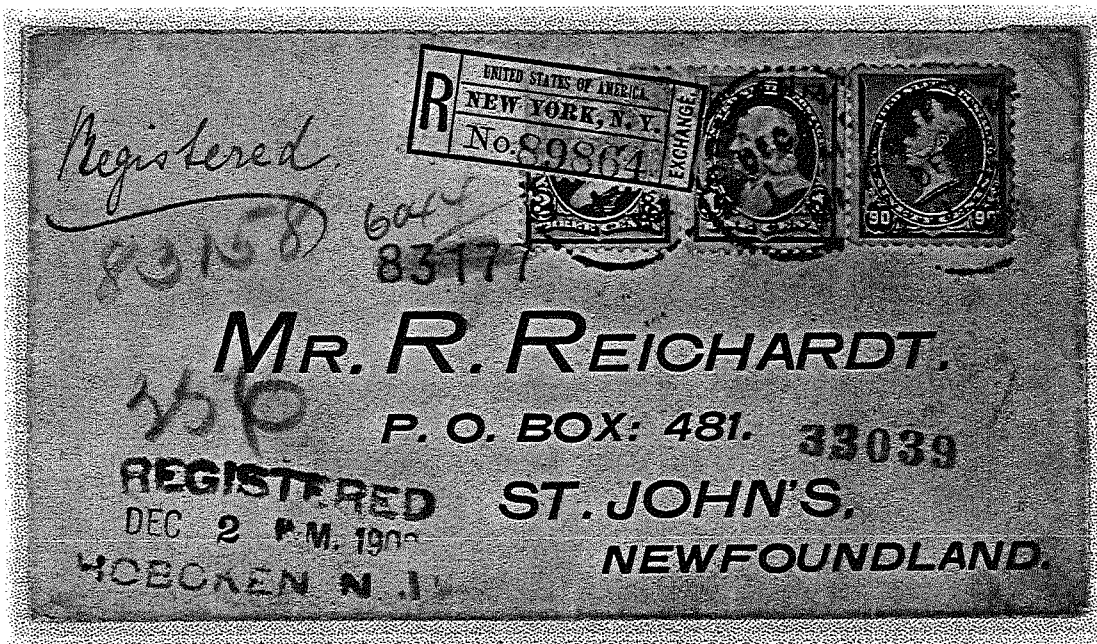


This Registered Package/Envelope required \$11.20 in postage and fees.
Since so little of it survives, we can only surmise what it may have contained
and what rates or fees the stamps may have paid.

The Ninety Cent Issue of 1890

On Cover Usage

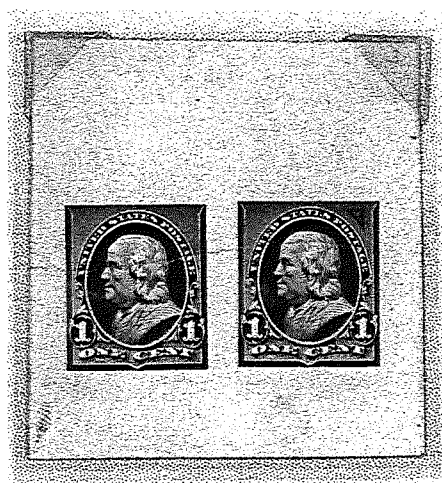
PFC 276929



12/2/1902 - Used with First Bureau One and Three Cent Issues
Registered Usage to Newfoundland
There are only 3-5 Covers known to exist

Assimilation into the First Bureau Issue of 1894

The Identifying feature of the First Bureau Issue is the triangles added to the upper corners of the basic 1890 design.



Lay-down Essay showing the adding of the triangles (upper right)

The designs of the 1890 Issue would be incorporated into the First Bureau Issue of 1894, bringing to a close the private printings called "The Bank Notes". Additionally, the Thirty Cent Design was changed to a Fifty Cent value and the Ninety Cent design to One Dollar value. The values of Two and Five Dollars were added with a similar design.



Cardboard Plate Proofs of the First Bureau Issue, the only values printed in this format.